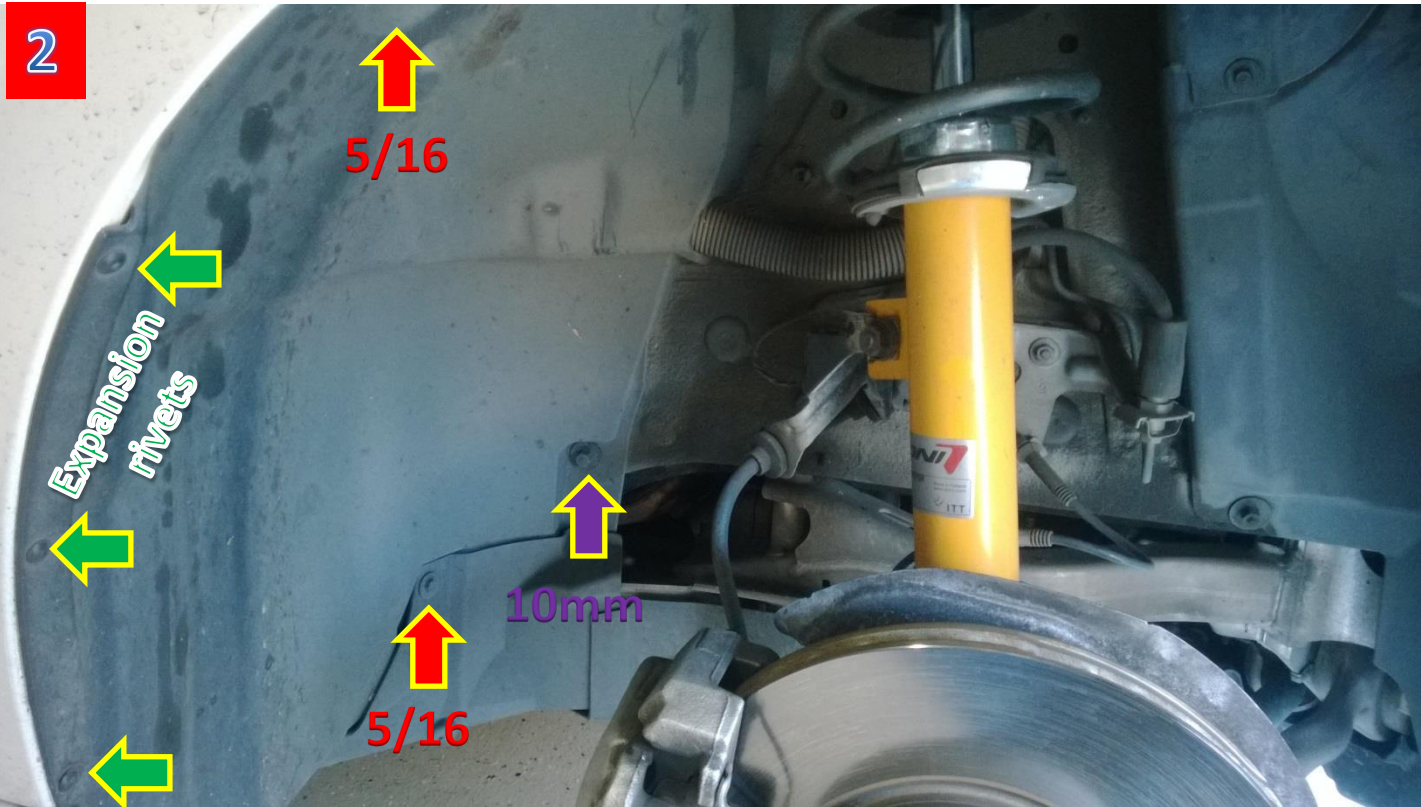


1



5/16

5/16



3

#10  
Torx head

↑  
10mm

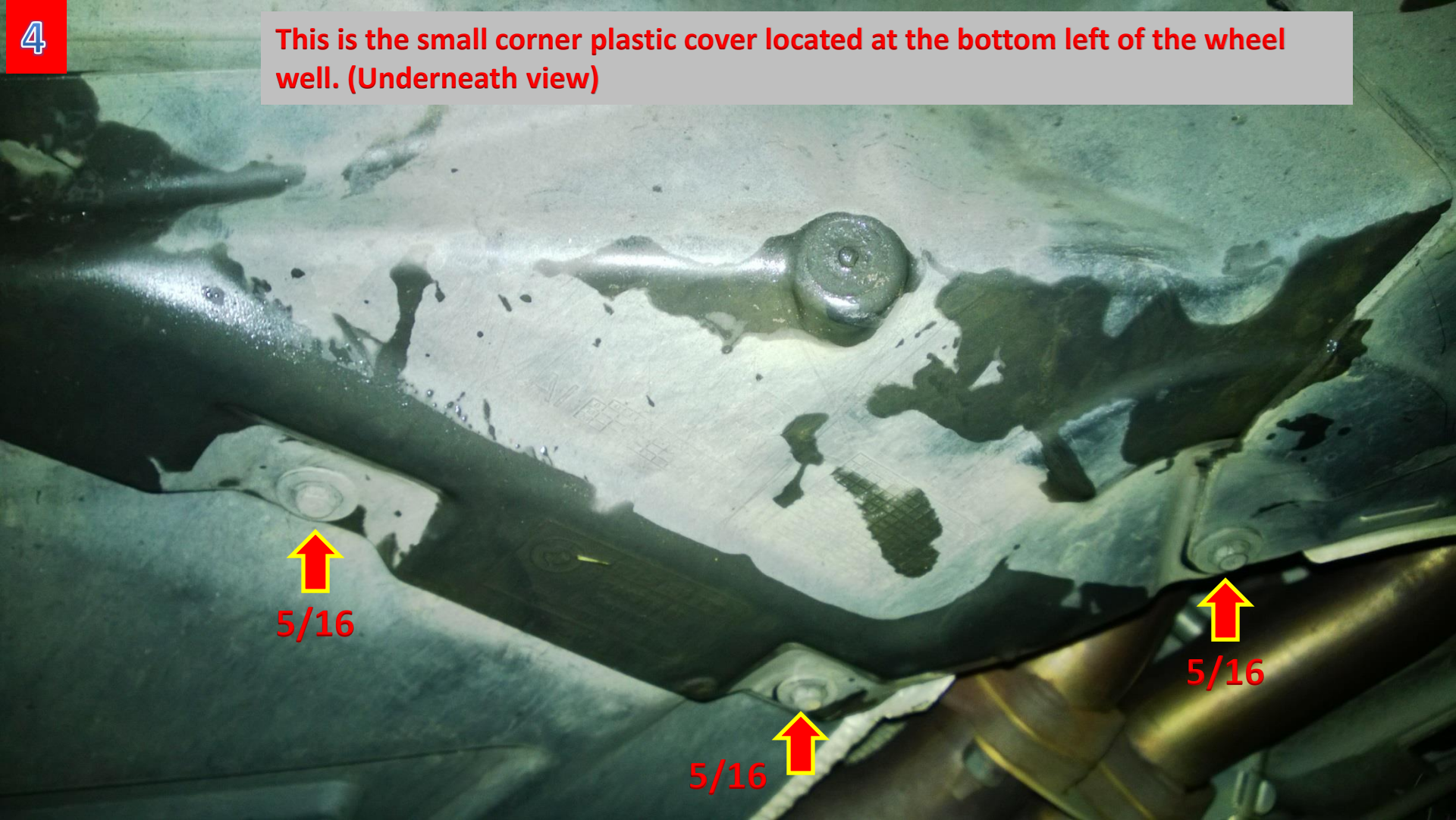
↑  
5/16

Passenger  
Side Door

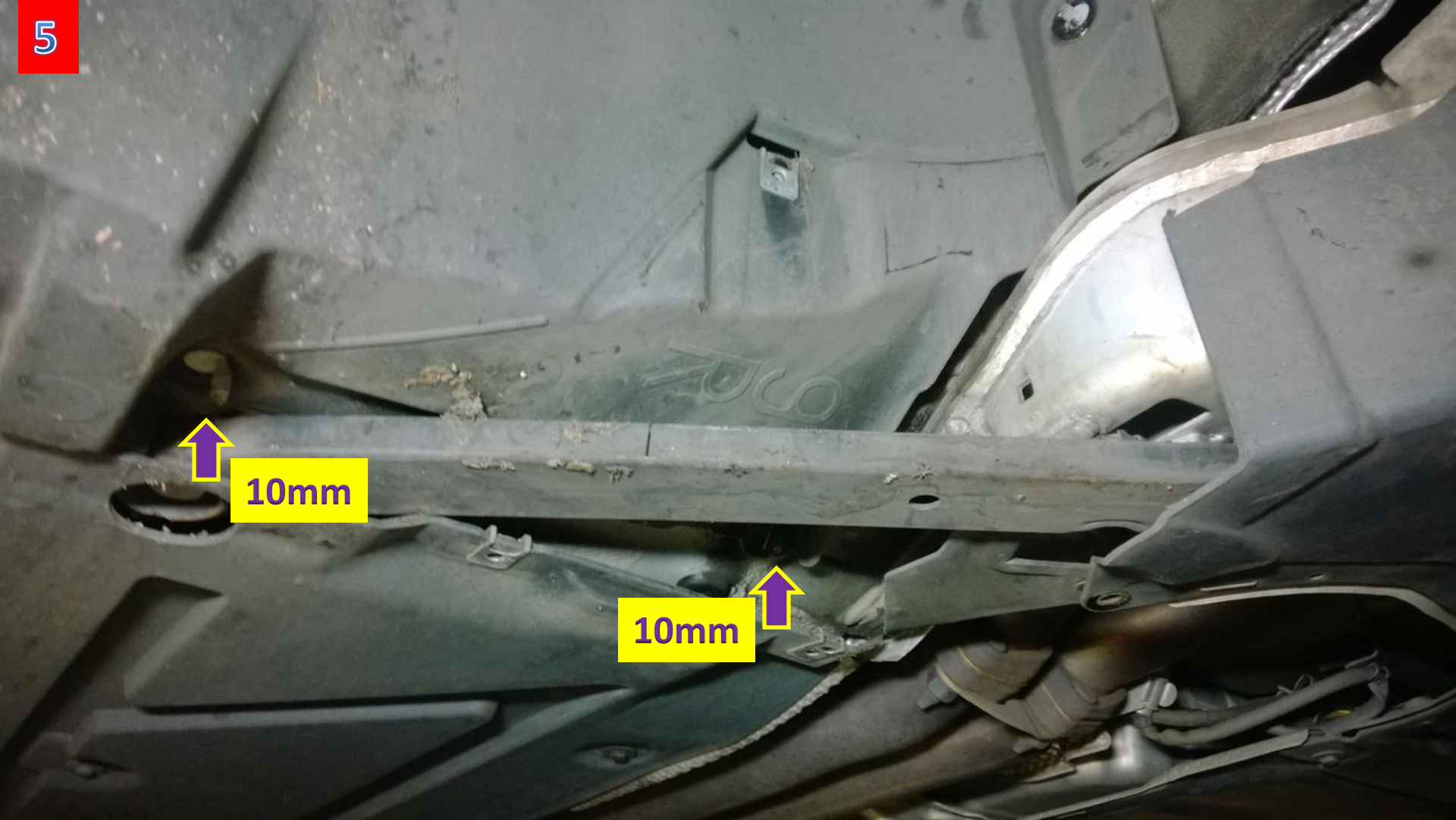


4

This is the small corner plastic cover located at the bottom left of the wheel well. (Underneath view)



5



10mm

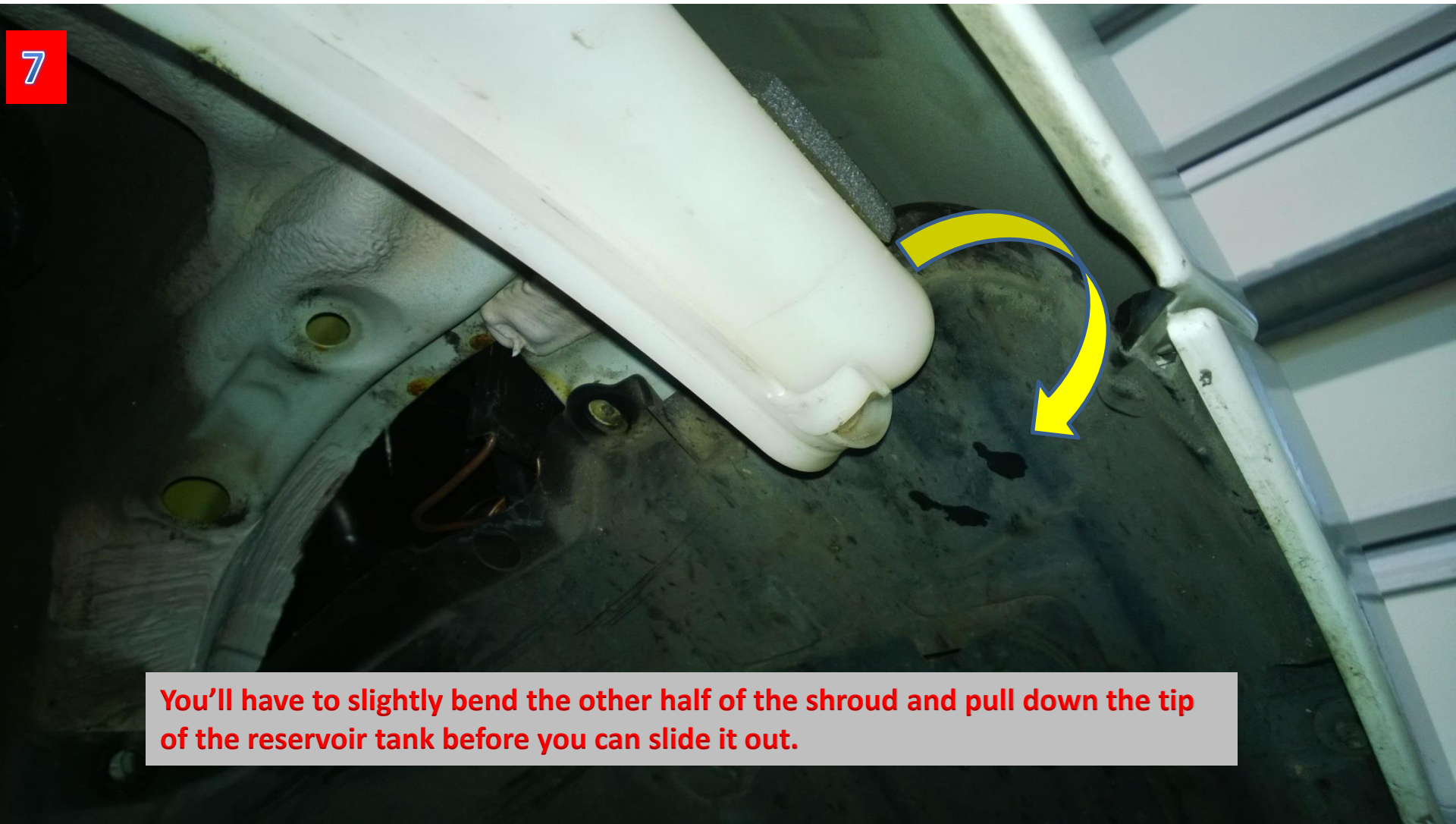
10mm

6



10mm

7



**You'll have to slightly bend the other half of the shroud and pull down the tip of the reservoir tank before you can slide it out.**

Place a small bucket below the filler tube and carefully remove it from the reservoir. Washer fluid will rush out quickly, so do it slowly. I did this to make the removal easier and prevent a rush of fluid when the pump is removed.





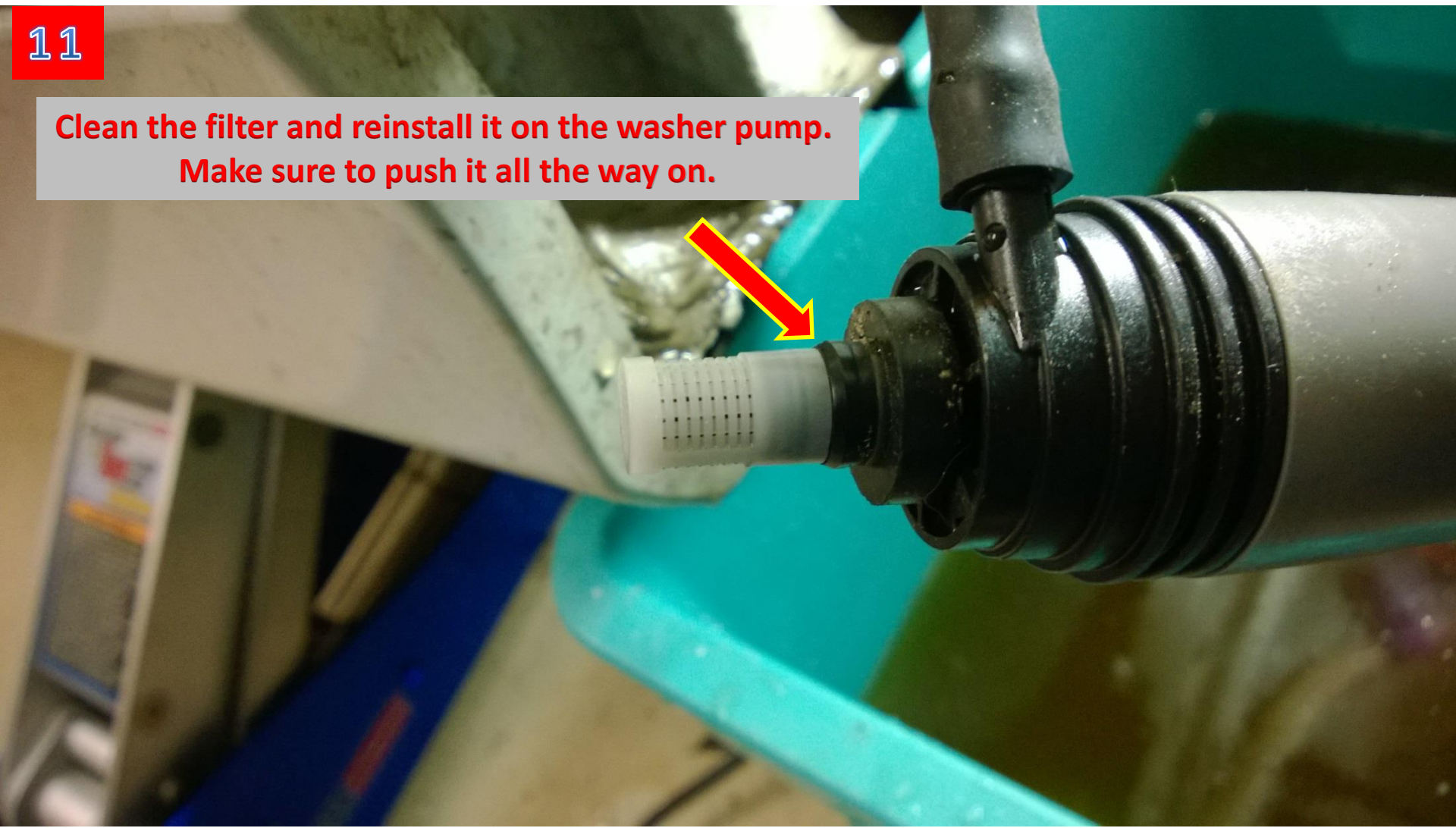
10

I won't be using the RainX any longer...



11

**Clean the filter and reinstall it on the washer pump.  
Make sure to push it all the way on.**



12

When reinstalling, be sure the pin on the back of the reservoir tank meets up with this hole.

