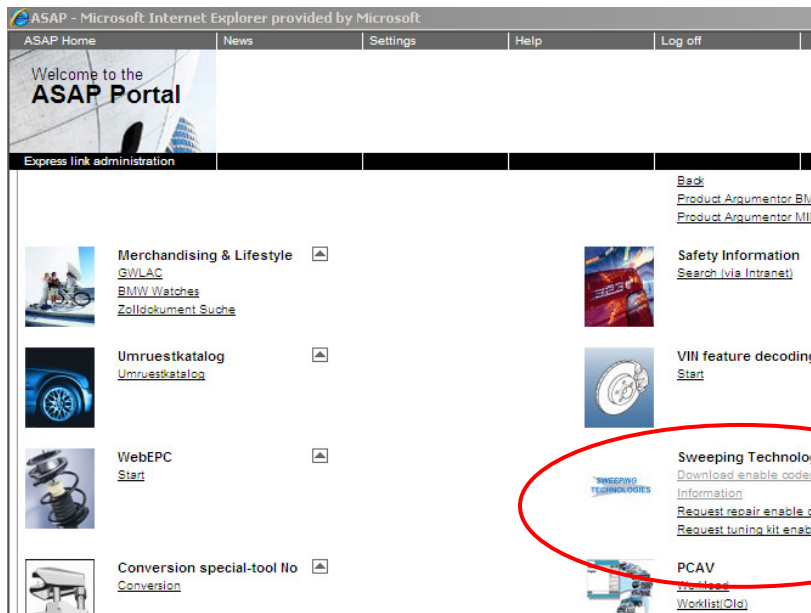
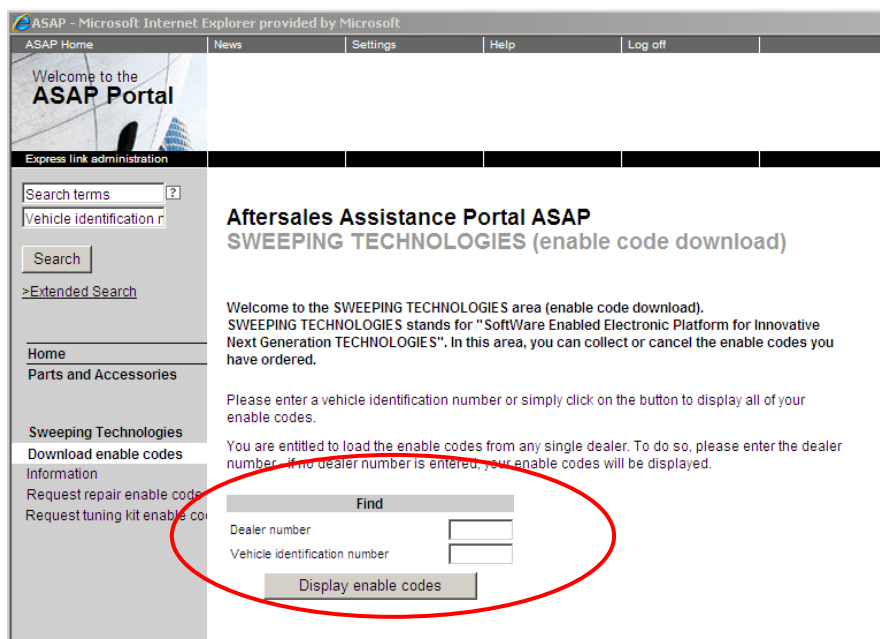


PROCEDURE

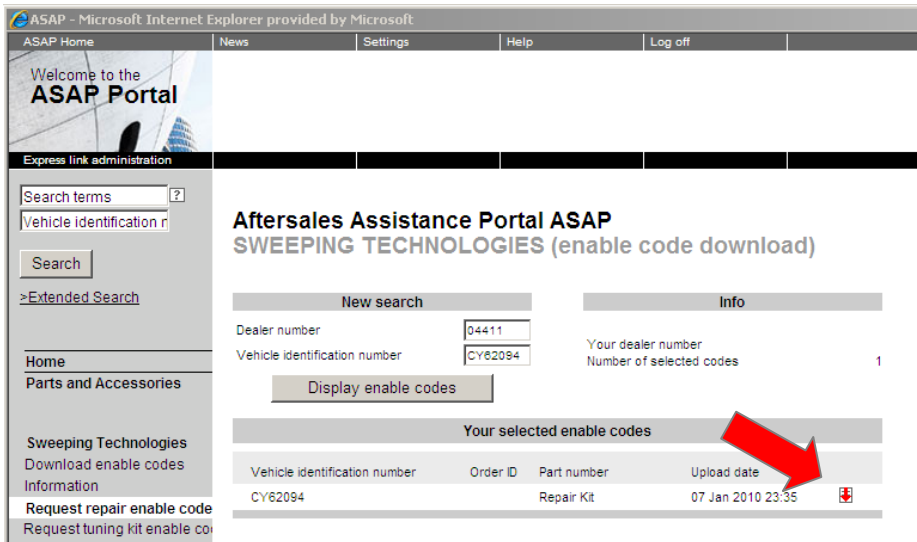
1. In cases where you want to perform a retrofit or a QC1 Pre-Delivery Check with a 2010 or higher navigation map which needs Enabling Codes, please make sure that such codes are ordered through Parts before you start working on the car. Refer to the EPC or the installation manual of the retrofit to get the correct part numbers. Remember that the ordering/delivery process needs up to 24 hours.
2. If you have a crashed or replaced module, you can order the codes directly in the ASAP Portal.



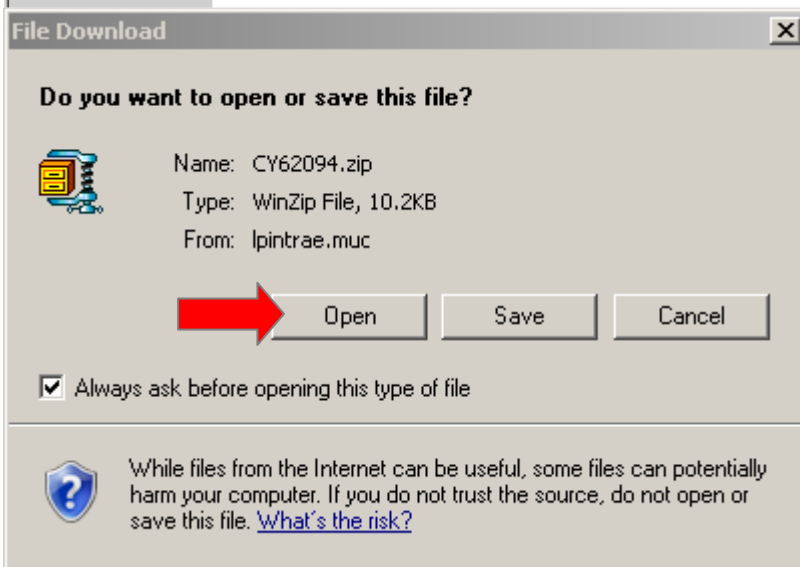
3. In the ASAP Portal, you will find the section Sweeping Technologies. Here you can download your ordered Enabling Codes, Request Repair Enabling Codes, or Request a tuning kit Enabling Code.



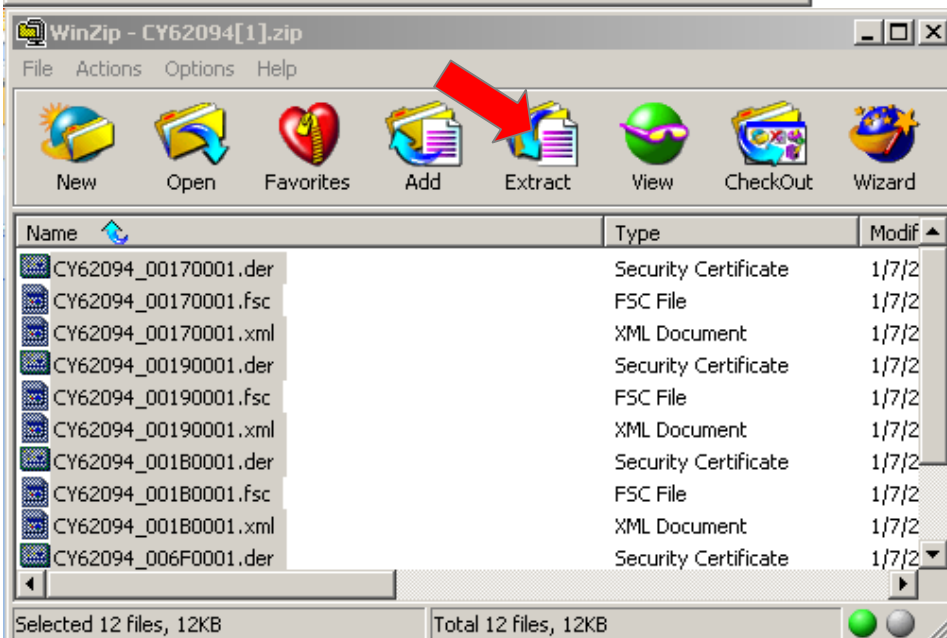
4. Enter Dealer number and VIN.



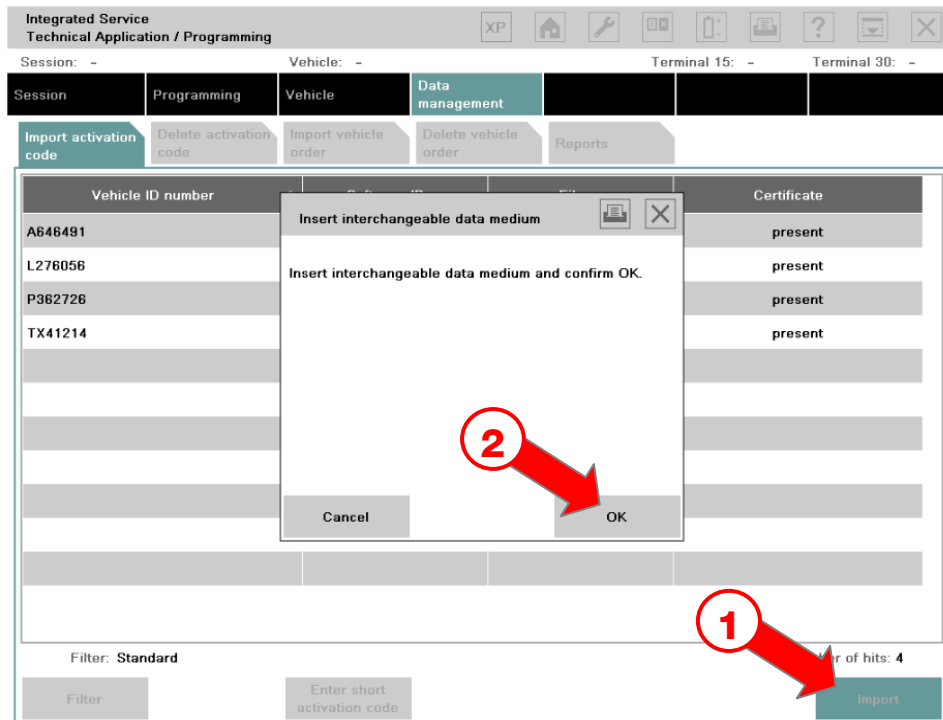
5. If codes were ordered or you requested a repair code, codes will be available and downloadable.



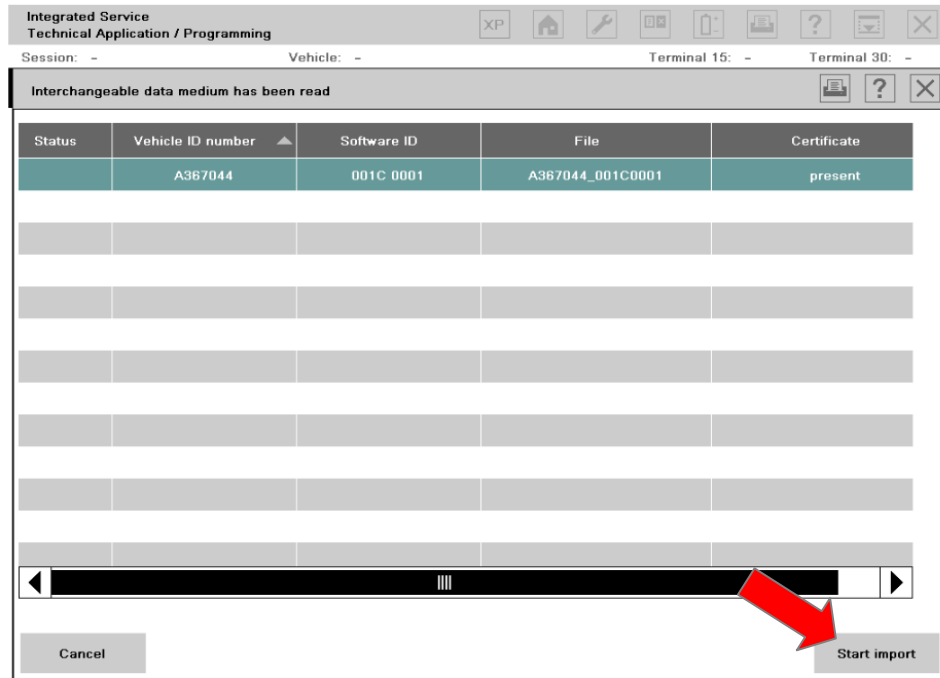
6. Open the .zip file.



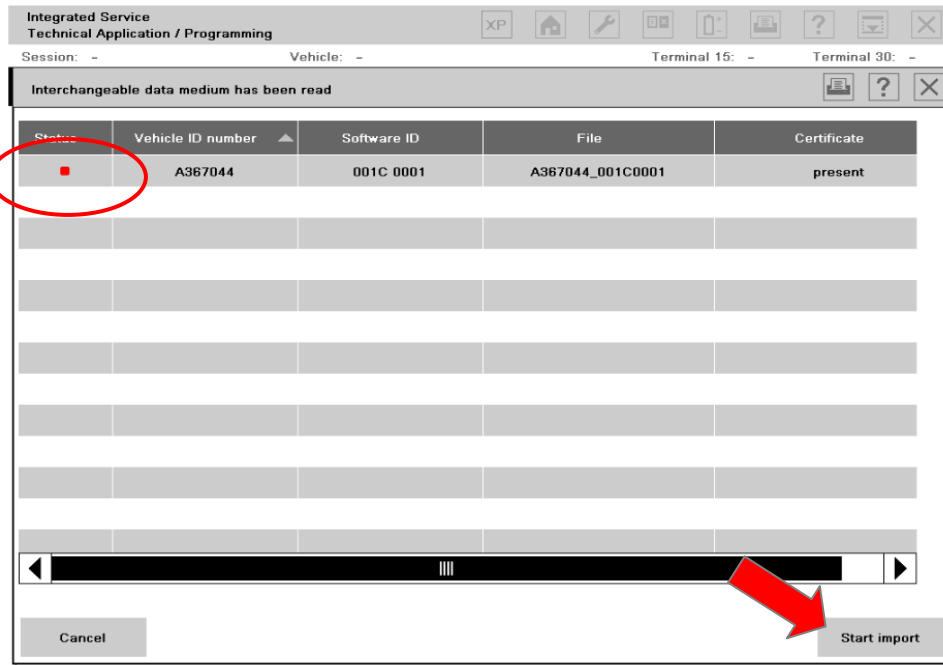
7. Select all the items in the .zip file (Ctrl+A) and extract them to the root directory (no sub-folders) of your USB-stick. If no stick is available, you can also burn the codes to the root directory (no sub-folders) on a CD-R.



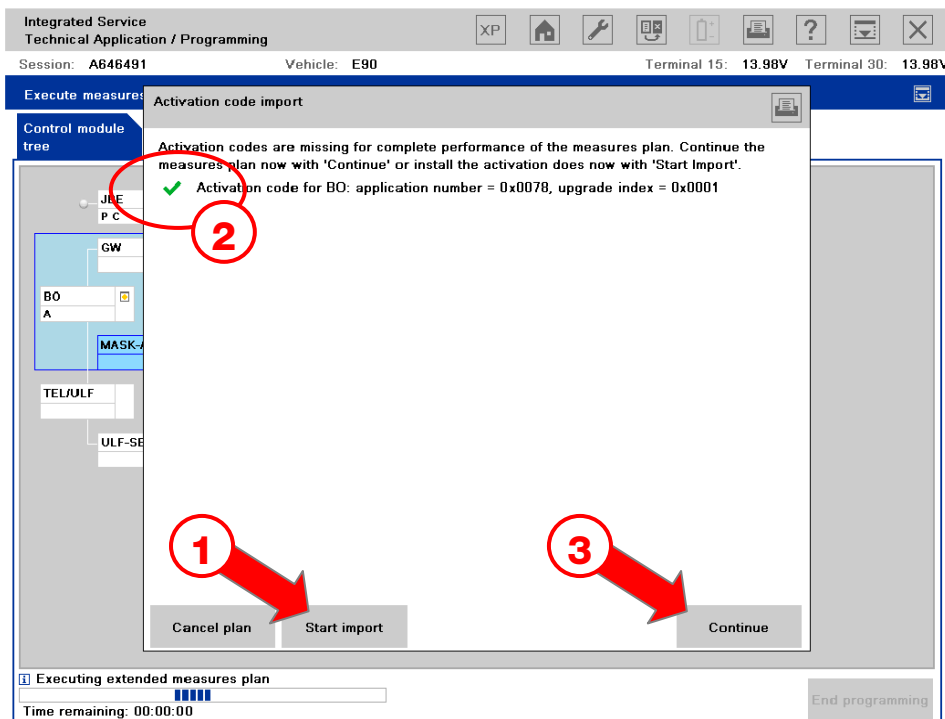
8. There are two options to upload Enabling Codes to ISTA/P. The first option is in the Data management-tab/ Import activation code tab. Select the Import button. ISTA/P will ask you to put in the USB-stick or CD-R. Confirm with "OK".



9. The VIN and Software ID should be visible in the next step. Select the codes you want to import and use the Start import button.



10. In the next screen, the codes will be marked with a red dot. Select the codes to be imported again and use the Start import button again. In this step, the certificates are imported into ISTA/P.



11. The second option to import Enabling Codes into ISTA/P is during a programming session. If codes are needed, and have not been imported previously in data management, ISTA/P will prompt for the Activation code import. Insert the USB stick or the CD-R, and select the Start import button. When the code is imported correctly, you'll see a green mark. Select continue to proceed with programming.