



**PRECISION**  
TURBO &  
ENGINE

**2010**

PRODUCT CATALOG





WELCOME TO THE WORLD OF REAL

## ***high performance***

### **ABOUT PRECISION**

*PRECISION TURBO* was founded in 1987 and has since become one of the premier manufacturers of performance turbochargers, intercoolers, and electronic fuel injectors for both street customers and hardcore enthusiasts. *PRECISION TURBO* has also become a major worldwide supplier of engine management systems, fuel system components, and related parts. *PRECISION TURBO* is your one stop shop for all your performance upgrades.

*PRECISION TURBO* has a staff of Sales/Technical Representatives with nearly 100 years of combined experience with extensive knowledge in turbocharged vehicles, fuel systems, and engine management. We are committed to provide full technical support on all of the products that we sell.

### **WHAT PRECISION HAS TO OFFER**

In addition to full technical support, *PRECISION TURBO* has a wide range of product lines with thousands of SKU numbers available for shipment from our centrally located facility in the Midwest.

Fully computerized ordering and shipping departments allow us to process and ship orders throughout the United States, and around the world.

Marketing programs with special reseller and retail promotions along with updated price sheets and technical information are sent out to all registered dealers on a quarterly basis.

### **PRECISION TURBO & ENGINE**

219.996.7832 | FAX: 219.996.7749 | [www.precisionturbo.net](http://www.precisionturbo.net)

### **MAILING ADDRESS**

*PRECISION TURBO* | P.O. Box 425 | Hebron, IN 46341

### **SHIPPING ADDRESS**

*PRECISION TURBO* | 616-A South Main Street | Hebron, IN 46341



## TABLE OF CONTENTS

CHAMPIONS & RECORD HOLDERS . . . . .	3 - 4
NEW PRODUCTS FOR 2010 . . . . .	5
HP TECHNOLOGY® TURBOS 465 - 1400 hp . . . . .	6 - 9
HP TECHNOLOGY® TURBOS 1475 - 2600 hp . . . . .	10
ENTRY LEVEL TURBOS 450 - 600 hp . . . . .	11
BUICK Sy/Ty . . . . .	12
TURBOCHARGERS . . . . .	13 - 16
TURBINE HOUSING OPTIONS . . . . .	17
TURBINE HOUSING TECH INFO . . . . .	18 - 20
COMPRESSOR COVERS . . . . .	21
TURBO ACCESSORIES . . . . .	22
BOOST CONTROL . . . . .	23 - 24
AIR-TO-AIR INTERCOOLER CORES . . . . .	25
COMPLETE AIR-TO-AIR INTERCOOLERS . . . . .	26
LIQUID-TO-AIR INTERCOOLERS . . . . .	27 - 28
FUEL SYSTEM COMPONENTS . . . . .	29
FUEL INJECTORS . . . . .	30
ENGINE MANAGEMENT SYSTEMS . . . . .	31
DATA ACQUISITION . . . . .	32
THROTTLE BODIES / INTAKE PLENUMS . . . . .	33
WARRANTIES / POLICIES . . . . .	34



**Brad Personett**

World's Quickest and Fastest Turbo Car: 5.843 @ 253.28MPH



**Tim Lynch**

World's Quickest and Fastest Turbo Outlaw 10.5  
6.400 @ 233.08MPH



**Chris Griswold**

NASA AIX National Champion



**Bruno Massel**

NHRA Comp Eliminator DD/AT Champion 7.20 @ 190.64MPH



**Spiro Pappas**

ADRL XTF ET record: 3.92ET



**Steve Lazzaro**

2009 OSCA Super Street Champion



**Clint Hairston**

PSCA Pro Street ET Record: 6.284 ET  
WCHRA Pro Street MPH Record: 230.23MPH



**AMS Performance**

Redline Time Attack Unlimited AWD Champion



**Eric Dillard**

ORSCA Limited Street ET and MPH Record: 4.659 @ 170.08MPH



**AMS Performance**

**World's Quickest and Fastest Drag EVO:**  
8.42 @ 171MPH



**David Hance**

1st Drag Radial car in the 6's. World's Quickest and  
Fastest Radial Car: 6.894 @ 223.40MPH



**Coby Rabon**

Orlando WSN Super Pro Street Winner



**Larry Larson**

Hot Rod Drag Week Unlimited Champion: 7.302 @ 204.63MPH



**Sean Lyon**

NMRA Drag Radial ET Record: 7.958 ET



**Troy Wakeman**

2.8 Class Multiple Event Winner



**Jesse James**

World's Fastest Hydrogen Powered Vehicle: 199.712MPH



219.996.7832 | [www.precisionturbo.net](http://www.precisionturbo.net)





**Dave Bowman**

WCHRA Drag Radial ET Record: 7.824 ET



**Wayne Jesel**

Bonneville Landspeed Record B/MP Record: 221.330MPH  
Bonneville Landspeed Record D/BMP Record: 262.118MPH



**Dave Guy**

NMRA Drag Radial MPH Record: 182.18MPH



**Alex Vrettos**

World's Quickest Drag Radial Car: 6.894 ET



**Joe Newsham**

Atco Outlaw 10.5 Champion  
ORSCA North Outlaw 10.5 Champion



**John Kolivas**

NMRA SSO ET Record: 7.321 ET



**Richard Barga/Hart**

NHRA Comp Eliminator CC/AT Record Holder: 7.28 @ 188.78MPH



**Dan Millen**

NMRA Pro Outlaw 10.5 Champion & ET Record: 6.695 ET



**George Poteet**

Bonneville Salt Flats C/BFCC Record 291.841MPH



**Kevin Hargett**

King Of The Hill Outlaw 10.5 Champion



**Conrad Scary**

NMCA Super Street ET & MPH Record: 6.690 @ 217.05MPH



**Mike Murillo**

NMRA Pro Outlaw 10.5 MPH Record: 224.74MPH



**Mike Brown**

2009 LSX Drag Radial Champion



**Chris Miller**

Outlaw SFWD Shootout Winner: 8.750 @ 172.34MPH



**Russell Counce**

NTPA Super Farm Grand National Champion

VISION  
TURBO  
BOOSTED



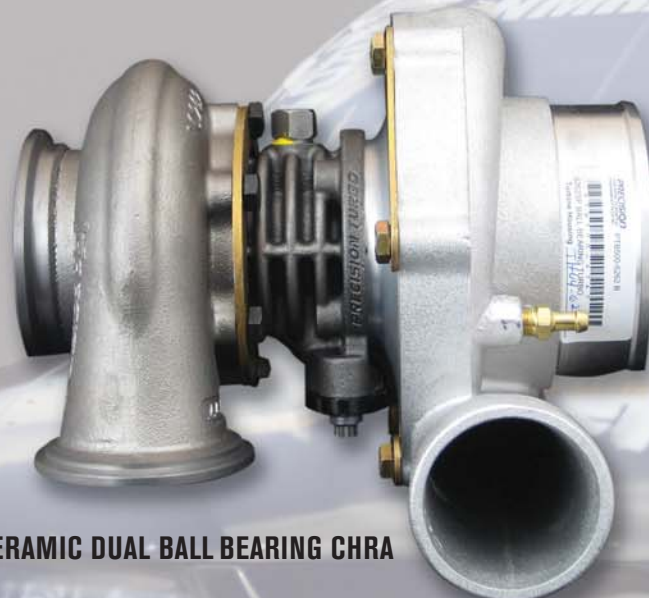


*PRECISION TURBO* continues to set the pace with 16 Championships and 31 Record Holders in the 2009 Racing Season.

*PRECISION TURBO* is committed to bringing the most technologically advanced products to the high performance aftermarket. In addition to developing upon our line of highly successful, PTE designed, CNC machined aluminum (billet) compressor wheels and lightweight v-band inlet and outlet turbine housings, we have designed a dual ceramic ball bearing center housing rotating assembly, and our PTE 46mm wastegate. As we continue to raise the bar in the high performance aftermarket, look for more and more new products set to be released in 2010.



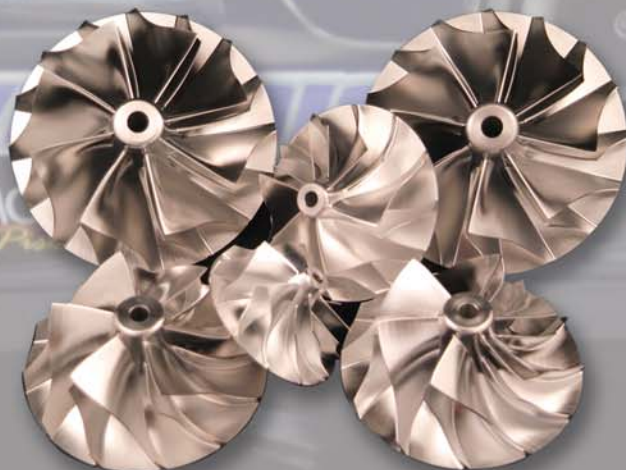
**V-BAND INLET / OUTLET TURBINE HOUSINGS**



**PTE CERAMIC DUAL BALL BEARING CHRA**



**PTE 46mm WASTEGATE**



**PTE BILLET COMPRESSOR WHEELS**



## 465HP

Part Number	Model Number	Compressor Wheel	Turbine Wheel	Compressor Cover	Exhaust Housing	Ball Bearing Option Available
PTB 200-5457	5457B	2.123" Ind / 2.950" Exd	2.555" Ind / 2.227" Exd 76 Trim	B See Page 21	Option Group A	Yes
PTB 300-5457	5457E	2.123" Ind / 2.950" Exd	2.555" Ind / 2.227" Exd 76 Trim	E See Page 21	Option Group A	Yes

## 495HP

Part Number	Model Number	Compressor Wheel	Turbine Wheel	Compressor Cover	Exhaust Housing	Ball Bearing Option Available
PTB 300-5557	5557E	2.170" Ind / 2.950" Exd	2.555" Ind / 2.227" Exd 76 Trim	E See Page 21	Option Group A	Yes

## 540HP

Part Number	Model Number	Compressor Wheel	Turbine Wheel	Compressor Cover	Exhaust Housing	Ball Bearing Option Available
PTB 300-5757	5757E	2.230" Ind / 2.950" Exd	2.555" Ind / 2.227" Exd 76 Trim	E See Page 21	Option Group A	Yes

## 570HP

Part Number	Model Number	Compressor Wheel	Turbine Wheel	Compressor Cover	Exhaust Housing	Ball Bearing Option Available
PTB 205-5557	5557B	2.165" Ind / 3.000" Exd	2.555" Ind / 2.227" Exd 76 Trim	B See Page 21	Option Group A	Yes
PTB 305-5557	5557E	2.165" Ind / 3.000" Exd	2.555" Ind / 2.227" Exd 76 Trim	E See Page 21	Option Group A	Yes
PTB 405-5557	5557S	2.165" Ind / 3.000" Exd	2.555" Ind / 2.227" Exd 76 Trim	S See Page 21	Option Group A	Yes
PTB 505-5557	5557SP	2.165" Ind / 3.000" Exd	2.555" Ind / 2.227" Exd 76 Trim	SP See Page 21	Option Group A	Yes
PTB 300-5857	5857E	2.290" Ind / 2.950" Exd	2.555" Ind / 2.227" Exd 76 Trim	E See Page 21	Option Group A	Yes



## 585HP

Part Number	Model Number	Compressor Wheel	Turbine Wheel	Compressor Cover	Exhaust Housing	Ball Bearing Option Available
PTB 300-5865	5865E	2.290" Ind / 2.950" Exd	2.920" Ind / 2.542" Exd 76 Trim	E See Page 21	Option Group C	Yes
PTB 400-5865	5865S	2.320" Ind / 3.000" Exd	2.555" Ind / 2.227" Exd 76 Trim	S See Page 21	Option Group A	Yes
PTB 200-5957	5957B	2.320" Ind / 3.000" Exd	2.555" Ind / 2.227" Exd 76 Trim	B See Page 21	Option Group A	Yes
PTB 300-5957	5957E	2.320" Ind / 3.000" Exd	2.555" Ind / 2.227" Exd 76 Trim	E See Page 21	Option Group A	Yes

## 595HP

Part Number	Model Number	Compressor Wheel	Turbine Wheel	Compressor Cover	Exhaust Housing	Ball Bearing Option Available
PTB 200-5962	5962B	2.320" Ind / 3.000" Exd	2.795" Ind / 2.437" Exd 76 Trim	B See Page 21	Option Group B	Yes
PTB 300-5962	5962E	2.320" Ind / 3.000" Exd	2.795" Ind / 2.437" Exd 76 Trim	E See Page 21	Option Group B	Yes
PTB 400-5962	5962S	2.320" Ind / 3.000" Exd	2.795" Ind / 2.437" Exd 76 Trim	S See Page 21	Option Group B	Yes

## 600HP

Part Number	Model Number	Compressor Wheel	Turbine Wheel	Compressor Cover	Exhaust Housing	Ball Bearing Option Available
PTB 200-5965	5965B	2.320" Ind / 3.000" Exd	2.920" Ind / 2.542" Exd 76 Trim	B See Page 21	Option Group C	Yes
PTB 300-5965	5965E	2.320" Ind / 3.000" Exd	2.920" Ind / 2.542" Exd 76 Trim	E See Page 21	Option Group C	Yes
PTB 400-5965	5965S	2.320" Ind / 3.000" Exd	2.920" Ind / 2.542" Exd 76 Trim	S See Page 21	Option Group C	Yes

## 605HP

Part Number	Model Number	Compressor Wheel	Turbine Wheel	Compressor Cover	Exhaust Housing	Ball Bearing Option Available
PTB 205-5857	5857B	2.285" Ind / 3.000" Exd	2.555" Ind / 2.227" Exd 76 Trim	B See Page 21	Option Group A	Yes
PTB 305-5857	5857E	2.285" Ind / 3.000" Exd	2.555" Ind / 2.227" Exd 76 Trim	E See Page 21	Option Group A	Yes
PTB 505-5857	5857SP	2.285" Ind / 3.000" Exd	2.555" Ind / 2.227" Exd 76 Trim	SP See Page 21	Option Group A	Yes





**615HP**

Part Number	Model Number	Compressor Wheel	Turbine Wheel	Compressor Cover	Exhaust Housing	Ball Bearing Option Available
PTB 205-5862	5862B	2.285" Ind/3.000" Exd	2.795" Ind/2.437" Exd 76 Trim	B See Page 21	Option Group B	Yes
PTB 305-5862	5862E	2.285" Ind/3.000" Exd	2.795" Ind/2.437" Exd 76 Trim	E See Page 21	Option Group B	Yes
PTB 505-5862	5862SP	2.285" Ind/3.000" Exd	2.795" Ind/2.437" Exd 76 Trim	Ported S See Page 21	Option Group B	Yes

**630HP**

Part Number	Model Number	Compressor Wheel	Turbine Wheel	Compressor Cover	Exhaust Housing	Ball Bearing Option Available
PTB 300-6057	6057E	2.375" Ind / 3.228" Exd	2.555" Ind / 2.227" Exd 76 Trim	E See Page 21	Option Group A	Yes
PTB 400-6057	6057S	2.375" Ind / 3.228" Exd	2.555" Ind / 2.227" Exd 76 Trim	S See Page 21	Option Group A	Yes
PTB 500-6057	6057SP	2.375" Ind/3.228" Exd	2.555" Ind / 2.227" Exd 76 Trim	Ported S See Page 21	Option Group A	Yes
PTB 300-6157	6157E	2.416" Ind / 3.227" Exd	2.555" Ind / 2.227" Exd 76 Trim	E See Page 21	Option Group A	Yes
PTB 400-6157	6157S	2.416" Ind / 3.227" Exd	2.555" Ind / 2.227" Exd 76 Trim	S See Page 21	Option Group A	Yes
PTB 500-6157	6157SP	2.416" Ind / 3.227" Exd	2.555" Ind / 2.227" Exd 76 Trim	Ported S See Page 21	Option Group A	Yes

**640HP**

Part Number	Model Number	Compressor Wheel	Turbine Wheel	Compressor Cover	Exhaust Housing	Ball Bearing Option Available
PTB 300-6162	6162E	2.416" Ind/3.227" Exd	2.795" Ind/2.437" Exd 76 Trim	E See Page 21	Option Group B	Yes
PTB 400-6162	6162S	2.416" Ind/3.227" Exd	2.795" Ind/2.437" Exd 76 Trim	S See Page 21	Option Group B	Yes
PTB 500-6162	6162SP	2.416" Ind/3.227" Exd	2.795" Ind/2.437" Exd 76 Trim	Ported S See Page 21	Option Group B	Yes

**650HP**

Part Number	Model Number	Compressor Wheel	Turbine Wheel	Compressor Cover	Exhaust Housing	Ball Bearing Option Available
PTB 300-6062	6062E	2.375" Ind/3.228" Exd	2.795" Ind/2.437" Exd 76 Trim	E See Page 21	Option Group B	Yes
PTB 400-6062	6062S	2.375" Ind/3.228" Exd	2.795" Ind/2.437" Exd 76 Trim	S See Page 21	Option Group B	Yes
PTB 500-6062	6062SP	2.375" Ind/3.228" Exd	2.795" Ind/2.437" Exd 76 Trim	Ported S See Page 21	Option Group B	Yes

**670HP**

Part Number	Model Number	Compressor Wheel	Turbine Wheel	Compressor Cover	Exhaust Housing	Ball Bearing Option Available
PTB 300-6165	6165E	2.416" Ind/3.227" Exd	2.920" Ind/2.542" Exd 76 Trim	E See Page 21	Option Group C	Yes
PTB 400-6165	6165S	2.416" Ind/3.227" Exd	2.920" Ind/2.542" Exd 76 Trim	S See Page 21	Option Group C	Yes
PTB 500-6165	6165SP	2.416" Ind/3.227" Exd	2.920" Ind/2.542" Exd 76 Trim	Ported S See Page 21	Option Group C	Yes

**680HP**

Part Number	Model Number	Compressor Wheel	Turbine Wheel	Compressor Cover	Exhaust Housing	Ball Bearing Option Available
PTB 300-6262	6262E	2.450" Ind/3.228" Exd	2.795" Ind/2.437" Exd 76 Trim	E See Page 21	Option Group B	Yes
PTB 400-6262	6262S	2.450" Ind/3.228" Exd	2.795" Ind/2.437" Exd 76 Trim	S See Page 21	Option Group B	Yes
PTB 500-6262	6262SP	2.450" Ind/3.228" Exd	2.795" Ind/2.437" Exd 76 Trim	Ported S See Page 21	Option Group B	Yes

**700HP**

Part Number	Model Number	Compressor Wheel	Turbine Wheel	Compressor Cover	Exhaust Housing	Ball Bearing Option Available
PTB 300-6265	6265E	2.450" Ind/3.228" Exd	2.920" Ind/2.542" Exd 76 Trim	E See Page 21	Option Group C	Yes
PTB 400-6265	6265S	2.450" Ind/3.228" Exd	2.920" Ind/2.542" Exd 76 Trim	S See Page 21	Option Group C	Yes
PTB 500-6265	6265SP	2.450" Ind/3.228" Exd	2.920" Ind/2.542" Exd 76 Trim	Ported S See Page 21	Option Group C	Yes





# Rickey Gadson / Adams Performance

PTE Custom 62mm Turbocharger

## 755HP

Part Number	Model Number	Compressor Wheel	Turbine Wheel	Compressor Cover	Exhaust Housing	Ball Bearing Option Available
PTB 300-6765	6765E	2.620" Ind/3.310" Exd	2.920" Ind/2.542" Exd 76 Trim	E See Page 21	Option Group C	Yes
PTB 400-6765	6765S	2.620" Ind/3.310" Exd	2.920" Ind/2.542" Exd 76 Trim	S See Page 21	Option Group C	Yes
PTB 500-6765	6765SP	2.620" Ind/3.310" Exd	2.920" Ind/2.542" Exd 76 Trim	Ported S See Page 21	Option Group C	Yes
PTB 600-6765	6765H	2.620" Ind/3.310" Exd	2.920" Ind/2.542" Exd 76 Trim	H See Page 21	Option Group C	Yes
PTB 650-6765	6765HP	2.620" Ind/3.310" Exd	2.920" Ind/2.542" Exd 76 Trim	Ported H See Page 21	Option Group C	Yes

## 800HP

Part Number	Model Number	Compressor Wheel	Turbine Wheel	Compressor Cover	Exhaust Housing	Ball Bearing Option Available
PTB 300-6768	67HPQE	2.620" Ind/3.310" Exd	3.111" Ind/2.693" Exd 75 Trim	E See Page 21	Option Group D	Yes
PTB 400-6768	67HPQS	2.620" Ind/3.310" Exd	3.111" Ind/2.693" Exd 75 Trim	S See Page 21	Option Group D	Yes
PTB 500-6768	67HPQSP	2.620" Ind/3.310" Exd	3.111" Ind/2.693" Exd 75 Trim	Ported S See Page 21	Option Group D	Yes
PTB 600-6768	67HPQH	2.620" Ind/3.310" Exd	3.111" Ind/2.693" Exd 75 Trim	H See Page 21	Option Group D	Yes
PTB 650-6768	67HPQHP	2.620" Ind/3.310" Exd	3.111" Ind/2.693" Exd 75 Trim	Ported H See Page 21	Option Group D	Yes

## 850HP

Part Number	Model Number	Compressor Wheel	Turbine Wheel	Compressor Cover	Exhaust Housing	Ball Bearing Option Available
PTB 600-7068	70HPQH	2.756" Ind/2.770" Exd	3.111" Ind/2.693" Exd 75 Trim	H See Page 21	Option Group D	Yes
PTB 650-7068	70HPQHP	2.756" Ind/2.770" Exd	3.111" Ind/2.693" Exd 75 Trim	Ported H See Page 21	Option Group D	Yes

## 885HP

Part Number	Model Number	Compressor Wheel	Turbine Wheel	Compressor Cover	Exhaust Housing	Ball Bearing Option Available
PTB 600-7075	70HPSH	2.756" Ind/2.770" Exd	3.228" Ind/2.956" Exd 84 Trim	H See Page 21	Option Group E	Yes
PTB 650-7075	70HPSHP	2.756" Ind/2.770" Exd	3.228" Ind/2.956" Exd 84 Trim	Ported H See Page 21	Option Group E	Yes

## 900HP

Part Number	Model Number	Compressor Wheel	Turbine Wheel	Compressor Cover	Exhaust Housing	Ball Bearing Option Available
PTB 305-6765	6765E	2.655" Ind/3.477" Exd	2.920" Ind/2.542" Exd 76 Trim	E See Page 21	Option Group C	Yes
PTB 405-6765	6765S	2.655" Ind/3.477" Exd	2.920" Ind/2.542" Exd 76 Trim	S See Page 21	Option Group C	Yes
PTB 505-6765	6765SP	2.655" Ind/3.477" Exd	2.920" Ind/2.542" Exd 76 Trim	Ported S See Page 21	Option Group C	Yes
PTB 605-6765	6765H	2.655" Ind/3.477" Exd	2.920" Ind/2.542" Exd 76 Trim	H See Page 21	Option Group C	Yes
PTB 655-6765	6765HP	2.655" Ind/3.477" Exd	2.920" Ind/2.542" Exd 76 Trim	Ported H See Page 21	Option Group C	Yes



## 935HP

Part Number	Model Number	Compressor Wheel	Turbine Wheel	Compressor Cover	Exhaust Housing	Ball Bearing Option Available
PTB 305-6768	67HPQE	2.655" Ind/3.477" Exd	3.111" Ind/2.693" Exd 75 Trim	E See Page 21	Option Group D	Yes
PTB 405-6768	67HPQS	2.655" Ind/3.477" Exd	3.111" Ind/2.693" Exd 75 Trim	S See Page 21	Option Group D	Yes
PTB 505-6768	67HPQSP	2.655" Ind/3.477" Exd	3.111" Ind/2.693" Exd 75 Trim	Ported S See Page 21	Option Group D	Yes
PTB 605-6768	67HPQH	2.655" Ind/3.477" Exd	3.111" Ind/2.693" Exd 75 Trim	H See Page 21	Option Group D	Yes
PTB 655-6768	67HPQHP	2.655" Ind/3.477" Exd	3.111" Ind/2.693" Exd 75 Trim	Ported H See Page 21	Option Group D	Yes



## 945HP

Part Number	Model Number	Compressor Wheel	Turbine Wheel	Compressor Cover	Exhaust Housing	Ball Bearing Option Available
PTB 605-7168	71HPQH	2.795" Ind/3.700" Exd	3.111" Ind/2.693" Exd 75 Trim	H See Page 21	Option Group D	Yes
PTB 655-7168	71HPQHP	2.795" Ind/3.700" Exd	3.111" Ind/2.693" Exd 75 Trim	Ported H See Page 21	Option Group D	Yes



## 985HP

Part Number	Model Number	Compressor Wheel	Turbine Wheel	Compressor Cover	Exhaust Housing	Ball Bearing Option Available
PTB 605-7175	71HPSHP	2.795" Ind/3.700" Exd	3.228" Ind/2.956" Exd 84 Trim	H See Page 21	Option Group E	Yes
PTB 655-7175	71HPSHP	2.795" Ind/3.700" Exd	3.228" Ind/2.956" Exd 84 Trim	Ported H See Page 21	Option Group E	Yes
PTB 150-4245	HP7175B	2.795" Ind/3.700" Exd	82mm Turbine Wheel 84 Trim	CC2 See Page 21	Call For Options	Yes
PTB 600-7275	72HPSH	2.864" Ind/4.030" Exd	3.228" Ind/2.956" Exd 84 Trim	H See Page 21	Option Group E	Yes
PTB 650-7275	72HPSHP	2.864" Ind/4.030" Exd	3.228" Ind/2.956" Exd 84 Trim	Ported H See Page 21	Option Group E	Yes



**1060HP**

Part Number	Model Number	Compressor Wheel	Turbine Wheel	Compressor Cover	Exhaust Housing	Ball Bearing Option Available
PTB 600-7475	74HPSH	2.941" Ind/4.030" Exd	3.228" Ind/2.956" Exd 84 Trim	H See Page 21	Option Group E	Yes
PTB 650-7475	74HPSHP	2.941" Ind/4.030" Exd	3.228" Ind/2.956" Exd 84 Trim	Ported H See Page 21	Option Group E	Yes

**1160HP**

Part Number	Model Number	Compressor Wheel	Turbine Wheel	Compressor Cover	Exhaust Housing	Ball Bearing Option Available
PTB 600-7875	78HPSH	3.070" Ind/4.030" Exd	3.228" Ind/2.956" Exd 84 Trim	H See Page 21	Option Group E	Yes

**1170HP**

Part Number	Model Number	Compressor Wheel	Turbine Wheel	Compressor Cover	Exhaust Housing	Ball Bearing Option Available
PTB 700-3000	PT80H	3.178" Ind/4.250" Exd	Turbine Wheel Varies By App.	H See Page 21	Call for Options	No

**1200HP**

Part Number	Model Number	Compressor Wheel	Turbine Wheel	Compressor Cover	Exhaust Housing	Ball Bearing Option Available
PTB 600-7675	76HPSH	3.020" Ind/4.030" Exd	3.228" Ind/2.956" Exd 84 Trim	H See Page 21	Option Group E	Yes
PTB 650-7675	76HPSHP	3.020" Ind/4.030" Exd	3.228" Ind/2.956" Exd 84 Trim	Ported H See Page 21	Option Group E	Yes
PTB 150-4240	HP7675B	3.020" Ind/4.030" Exd	82mm Turbine Wheel 84 Trim	CC2 See Page 21	Call For Options	Yes

**1225HP**

Part Number	Model Number	Compressor Wheel	Turbine Wheel	Compressor Cover	Exhaust Housing	Ball Bearing Option Available
PTB 700-3029	PT8047H	3.182" Ind/4.252" Exd	3.650" Ind/3.290" Exd	H See Page 21	Call for Options	No

**1250HP**

Part Number	Model Number	Compressor Wheel	Turbine Wheel	Compressor Cover	Exhaust Housing	Ball Bearing Option Available
PTB 150-4510	HP7680B	3.020" Ind/4.030" Exd	80mm Turbine Wheel, 85 Trim	CC2 See Page 21	Call for Options	Yes
PTB 700-3025	PT88H	3.420" Ind/4.268" Exd	Turbine Wheel Varies By Application	H See Page 21	Call for Options	No

**1325HP**

Part Number	Model Number	Compressor Wheel	Turbine Wheel	Compressor Cover	Exhaust Housing	Ball Bearing Option Available
PTB 700-8280	HP8280	3.228" Ind/4.252" Exd	80mm Turbine Wheel, 85 Trim	CC2, CC7 See Page 21	Call for Options	Yes

**1350HP**

Part Number	Model Number	Compressor Wheel	Turbine Wheel	Compressor Cover	Exhaust Housing	Ball Bearing Option Available
PTB 700-8284	HP8284	3.228" Ind/4.252" Exd	84mm Turbine Wheel, 82 Trim	CC7 See Page 21	Call for Options	No

**1400HP**

Part Number	Model Number	Compressor Wheel	Turbine Wheel	Compressor Cover	Exhaust Housing	Ball Bearing Option Available
PTB 700-3027	PT8847H	88mm Ind/118mm Exd	92.7mm Turbine Wheel, 82 Trim	H See Page 21	Call for Options	No

**6765****71HPS****PRO MOD 94**





## 1475HP

Part Number	Model Number	Compressor Wheel	Turbine Wheel	Compressor Cover	Exhaust Housing	Ball Bearing Option Available
PTB 700-4788	HP8884	3.462" Ind/4.765" Exd	84mm Turbine Wheel, 82 Trim	CC7 See Page 21	Call for Options	Yes



## 1550HP

Part Number	Model Number	Compressor Wheel	Turbine Wheel	Compressor Cover	Exhaust Housing	Ball Bearing Option Available
PTB 700-8802	Pro Mod 88	3.462" Ind/4.765" Exd	HP112 TW 4.391" Ind/4.02" Exd	CC7 See Page 21	Call for Options	Yes
PTB 700-5025	PT91.5	3.602" Ind/5.560" Exd	F or G trim turbine wheel	CCP See Page 21	Call for Options	No



## 1620HP

Part Number	Model Number	Compressor Wheel	Turbine Wheel	Compressor Cover	Exhaust Housing	Ball Bearing Option Available
PTB 700-5050	PT94	3.700" Ind/5.560" Exd	F or G trim turbine wheel	CCP See Page 21	Call for Options	No



## 1650HP

Part Number	Model Number	Compressor Wheel	Turbine Wheel	Compressor Cover	Exhaust Housing	Ball Bearing Option Available
PTB 700-9102	Pro Mod 91	3.600" Ind/4.975" Exd	HP112 TW 4.391" Ind/4.02" Exd	CC7 See Page 21	Call for Options	Yes



## 1775HP

Part Number	Model Number	Compressor Wheel	Turbine Wheel	Compressor Cover	Exhaust Housing	Ball Bearing Option Available
PTB 700-5075	PT96	3.780" Ind/5.560" Exd	F or G trim turbine wheel	CCP See Page 21	Call for Options	No

## 1825HP

Part Number	Model Number	Compressor Wheel	Turbine Wheel	Compressor Cover	Exhaust Housing	Ball Bearing Option Available
PTB 700-9402	Pro Mod 94	3.700" Ind/4.975" Exd	HP112 TW 4.391" Ind/4.02" Exd	CC7 See Page 21	Call for Options	Yes



## 1900HP

Part Number	Model Number	Compressor Wheel	Turbine Wheel	Compressor Cover	Exhaust Housing	Ball Bearing Option Available
PTB 700-5100	PT98	3.858" Ind/5.560" Exd	F or G trim turbine wheel	CCP See Page 21	Call for Options	No

## 2100HP

Part Number	Model Number	Compressor Wheel	Turbine Wheel	Compressor Cover	Exhaust Housing	Ball Bearing Option Available
PTB 700-5125	PT101	4.000" Ind/5.560" Exd	F or G trim turbine wheel	CCP See Page 21	Call for Options	No

## 2400HP

Part Number	Model Number	Compressor Wheel	Turbine Wheel	Compressor Cover	Exhaust Housing	Ball Bearing Option Available
PTB 700-5150	PT106	4.160" Ind/5.560" Exd	G Trim turbine wheel	CCP See Page 21	Call for Options	No



## 2600HP

Part Number	Model Number	Compressor Wheel	Turbine Wheel	Compressor Cover	Exhaust Housing	Ball Bearing Option Available
PTB 700-5175	PT114	4.500" Ind/5.562" Exd	G Trim turbine wheel	CCP See Page 21	Call for Options	No



*Trying to put together a cost effective turbocharger system for your vehicle?*

We have just what you are looking for. *PRECISION TURBO'S* line of Entry Level Turbochargers provides the perfect solution delivering a high quality product for those on a budget. With several units to choose from, as well as numerous turbine housing options, *PRECISION TURBO* has you covered.

### 450HP

Part Number	Model Number	Compressor Wheel	Turbine Wheel	Compressor Cover	Turbine Housing	Ball Bearing Option Available
PTB 003-5031	5031E	2.123" Ind/2.950" Exd	2.559" Ind/2.228" Exd	E See Page 21	Call for Options	No

### 490HP

Part Number	Model Number	Compressor Wheel	Turbine Wheel	Compressor Cover	Turbine Housing	Ball Bearing Option Available
PTB 003-3231	3231E	2.170" Ind/2.950" Exd	2.559" Ind/2.228" Exd	E See Page 21	Call for Options	No

### 545HP

Part Number	Model Number	Compressor Wheel	Turbine Wheel	Compressor Cover	Turbine Housing	Ball Bearing Option Available
PTB 003-3431	3431E	2.230" Ind/2.950" Exd	2.559" Ind/2.228" Exd	E See Page 21	Call for Options	No

### 565HP

Part Number	Model Number	Compressor Wheel	Turbine Wheel	Compressor Cover	Turbine Housing	Ball Bearing Option Available
PTB 003-4431	4431E	2.290" Ind/2.950" Exd	2.559" Ind/2.228" Exd	E See Page 21	Call for Options	No

### 590HP

Part Number	Model Number	Compressor Wheel	Turbine Wheel	Compressor Cover	Turbine Housing	Ball Bearing Option Available
PTB 003-6031	6031E	2.320" Ind/2.950" Exd	2.559" Ind/2.228" Exd	E See Page 21	Call for Options	No

### 600HP

Part Number	Model Number	Compressor Wheel	Turbine Wheel	Compressor Cover	Turbine Housing	Ball Bearing Option Available
PTB 003-6076	6076E	2.320" Ind/2.950" Exd	2.920" Ind/2.542" Exd	E See Page 21	Call for Options	No





Don Cruz  
HP71HPQ Turbocharger



*PRECISION TURBO* continues to support the Buick and Sy/Ty communities with its line of model-specific turbochargers. *PRECISION TURBO* has champions and record holders in the Buick TSO, TSL and TSM classes, as well as several record setters in the Sy/Ty community. Whether it's a stock replacement or an upgrade to take you to the strip, *PRECISION TURBO* Techs will be able to put you into the right unit for your application. Call us for options and availability in a wide array of Buick and Sy/Ty turbochargers.

HP6262S



PT72 Sy/Ty



**PRECISION**  
TURBO &  
ENGINE

BUICK / SY-TY

In addition to our excellent line of turbochargers featuring HP Technology, *PRECISION TURBO* also carries the Garrett® line of turbochargers. These units provide an “out of the box” solution for most applications, and are available with a variety of turbine housing options. Please contact one of our Sales/Technical Representatives for further information.

### 130HP

Part Number	Model Number	Compressor Wheel	Turbine Wheel	Exhaust Housings	Ball Bearing Option Available
PTB 150-1200	GT1241	29.0mm Ind / 41.0mm Exd	35.5mm Turbine Wheel 72 Trim	Call for Options	No

### 200HP

Part Number	Model Number	Compressor Wheel	Turbine Wheel	Exhaust Housings	Ball Bearing Option Available
PTB 150-1500	GT1548	37.2mm Ind / 48.0mm Exd	41.2mm Turbine Wheel 72 Trim	Call for Options	No

### 250HP

Part Number	Model Number	Compressor Wheel	Turbine Wheel	Exhaust Housings	Ball Bearing Option Available
PTB 150-2500	GT2554R	42.0mm Ind / 54.3mm Exd	53.0mm Turbine Wheel 62 Trim	Call for Options	Yes

### 280HP

Part Number	Model Number	Compressor Wheel	Turbine Wheel	Exhaust Housings	Ball Bearing Option Available
PTB 150-2210	GT2259	42.8mm Ind / 59.4mm Exd	50.3mm Turbine Wheel 72 Trim	Call for Options	No

### 330HP

Part Number	Model Number	Compressor Wheel	Turbine Wheel	Exhaust Housings	Ball Bearing Option Available
PTB 150-2800	GT2560R	46.5mm Ind / 60.0mm Exd	53.8mm Turbine Wheel 76 Trim	Call for Options	Yes

### 360HP

Part Number	Model Number	Compressor Wheel	Turbine Wheel	Exhaust Housings	Ball Bearing Option Available
PTB 150-2810	GT2860RS	47.2mm Ind / 60.0mm Exd	53.8mm Turbine Wheel 76 Trim	Call for Options	Yes
PTB 150-2815	GT2860R-05	47.2mm Ind / 60.0mm Exd	53.8mm Turbine Wheel 76 Trim	Call for Options	Yes





## 390HP

Part Number	Model Number	Compressor Wheel	Turbine Wheel	Exhaust Housings	Ball Bearing Option Available
PTB 150-2820	GT2871RLB-1	49.2mm Ind/71.0mm Exd	53.8mm Turbine Wheel 76 Trim	Call for Options	Yes

## 440HP

Part Number	Model Number	Compressor Wheel	Turbine Wheel	Exhaust Housings	Ball Bearing Option Available
PTB 150-2818	GT2871RL	51.2mm Ind/71.0mm Exd	53.8mm Turbine Wheel 76 Trim	Call for Options	Yes
PTB 150-2830	GT2871RLB-2	53.1mm Ind/71.0mm Exd	53.8mm Turbine Wheel 76 Trim	Call for Options	Yes
PTB 150-2835	GT2871RLE-2	53.1mm Ind/71.0mm Exd	53.8mm Turbine Wheel 76 Trim	Call for Options	Yes

## 450HP

Part Number	Model Number	Compressor Wheel	Turbine Wheel	Exhaust Housings	Ball Bearing Option Available
PTB 150-3000	GT3071RLB	53.1mm Ind/71.0mm Exd	56.5mm Turbine Wheel 84 Trim	Call for Options	Yes
PTB 150-3010	GT3071RLE	53.1mm Ind/71.0mm Exd	56.5mm Turbine Wheel 84 Trim	Call for Options	Yes

## 525HP

Part Number	Model Number	Compressor Wheel	Turbine Wheel	Exhaust Housings	Ball Bearing Option Available
PTB 150-3020	GT3076RLEP	57mm Ind/76.2mm Exd	60mm Turbine Wheel 84 Trim	Call for Options	Yes

## 550HP

Part Number	Model Number	Compressor Wheel	Turbine Wheel	Exhaust Housings	Ball Bearing Option Available
PTB 150-3012	GT3076RLB-12	57mm Ind/76.2mm Exd	60mm Turbine Wheel 84 Trim	Call for Options	Yes
PTB 150-3015	GT3076RLE-12	57mm Ind/76.2mm Exd	60mm Turbine Wheel 84 Trim	Call for Options	Yes

## 600HP

Part Number	Model Number	Compressor Wheel	Turbine Wheel	Exhaust Housings	Ball Bearing Option Available
PTB 150-3060	GT3076RLB-13	59mm Ind/76.2 Exd	60mm Turbine Wheel 84 Trim	Call for Options	Yes
PTB 150-3070	GT3076RLE-13	59mm Ind/76.2 Exd	60mm Turbine Wheel 84 Trim	Call for Options	Yes
PTB 150-3080	GT3076RLS-13	59mm Ind/76.2 Exd	60mm Turbine Wheel 84 Trim	Call for Options	Yes

## 650HP

Part Number	Model Number	Compressor Wheel	Turbine Wheel	Exhaust Housings	Ball Bearing Option Available
PTB 150-3550	GT3582RLE	61.4mm Ind/82.0mm Exd	68mm Turbine Wheel 84 Trim	Call for Options	Yes
PTB 150-3560	GT3582RLS	61.4mm Ind/82.0mm Exd	68mm Turbine Wheel 84 Trim	Call for Options	Yes
PTB 150-3570	GT3582RLSP	61.4mm Ind/82.0mm Exd	68mm Turbine Wheel 84 Trim	Call for Options	Yes

## 670HP

Part Number	Model Number	Compressor Wheel	Turbine Wheel	Exhaust Housings	Ball Bearing Option Available
PTB 150-4000	GT4082	58mm Ind/82.0mm Exd	77mm Turbine Wheel 73 Trim	Call for Options	No

**700HP**

Part Number	Model Number	Compressor Wheel	Turbine Wheel	Exhaust Housings	Ball Bearing Option Available
PTB 150-4030	GT4088R	63.5mm Ind / 88.0mm Exd	77mm Turbine Wheel 78 Trim	Call for Options	Yes

**800HP**

Part Number	Model Number	Compressor Wheel	Turbine Wheel	Exhaust Housings	Ball Bearing Option Available
PTB 150-4062	GT4094R	67.8mm Ind / 94.0mm Exd	77mm Turbine Wheel 78 Trim	Call for Options	Yes

**850HP**

Part Number	Model Number	Compressor Wheel	Turbine Wheel	Exhaust Housings	Ball Bearing Option Available
PTB 150-4200	GT4294	70.3mm Ind / 94.0mm Exd	82mm Turbine Wheel 84 Trim	Call for Options	No
PTB 150-4250	GT4294R	70.3mm Ind / 94.0mm Exd	82mm Turbine Wheel 84 Trim	Call for Options	Yes

**1000HP**

Part Number	Model Number	Compressor Wheel	Turbine Wheel	Exhaust Housings	Ball Bearing Option Available
PTB 150-4210	GT4202	74.3mm Ind / 102.3mm Exd	82mm Turbine Wheel 84 Trim	Call for Options	No
PTB 150-4230	GT4202RL	74.3mm Ind / 102.3mm Exd	82mm Turbine Wheel 84 Trim	Call for Options	Yes

**1100HP**

Part Number	Model Number	Compressor Wheel	Turbine Wheel	Exhaust Housings	Ball Bearing Option Available
PTB 150-4505	GT4508R	80.8mm Ind / 108mm Exd	87mm Turbine Wheel 85 Trim	Call for Options	Yes

**1200HP**

Part Number	Model Number	Compressor Wheel	Turbine Wheel	Exhaust Housings	Ball Bearing Option Available
PTB 150-5000	GT4708	80.8mm Ind / 108mm Exd	92.7mm Turbine Wheel 82 Trim	Call for Options	No
PTB 150-5001	GT4708R	80.8mm Ind / 108mm Exd	92.7mm Turbine Wheel 82 Trim	Call for Options	Yes

**1400HP**

Part Number	Model Number	Compressor Wheel	Turbine Wheel	Exhaust Housings	Ball Bearing Option Available
PTB 150-5030	GT4718	88mm Ind / 118mm Exd	92.7mm Turbine Wheel 82 Trim	Call for Options	No
PTB 150-5031	GT4718R	88mm Ind / 118mm Exd	92.7mm Turbine Wheel 82 Trim	Call for Options	Yes

**1550HP**

Part Number	Model Number	Compressor Wheel	Turbine Wheel	Exhaust Housings	Ball Bearing Option Available
PTB 150-5900	GT5533	91.2mm Ind / 133mm Exd	111.4mm Turbine Wheel 84 Trim	Call for Options	No
PTB 150-5901	GT5533R	91.2mm Ind / 133mm Exd	111.4mm Turbine Wheel 84 Trim	Call for Options	Yes

**2000HP**

Part Number	Model Number	Compressor Wheel	Turbine Wheel	Exhaust Housings	Ball Bearing Option Available
PTB 150-6000	GT6041	105.7mm Ind / 141.2mm Exd	130mm Turbine Wheel 84 Trim	Call for Options	No



Bruno Massel  
HP7675 Turbocharger



After years of being a distributor for the Borg Warner Air Werks line of turbochargers, we are proud to offer a few units that we feel provide excellent performance at an affordable price. These units feature Borg Warner's extended tip compressor wheel technology (ETT) for improved airflow and higher-pressure ratios, and unique turbine housing configurations for a variety of application requirements. Please contact one of our Sales/Technical Representatives for further information.

Model Number	Compressor Wheel	Turbine Wheel	Turbine Housing
177248	2.799 Ind (71.08mm)	2.925 Exd (74mm)	1.10 A/R
177101	2.940 Ind (74.68mm)	3.286 Exd (74mm)	1.10 A/R
177787	3.160 Ind (80.00mm)	3.460 Exd (88mm)	1.32 A/R



S400SX 80mm



SX400SX 71mm

TURBOCHARGERS

## TURBINE HOUSING KEY

### Turbine Hsg Option Group A HP57

Style	A/R's
MITSU	.48, .63 (W, WD, N)
BUICK	.63
T3-5BOLT	.48, .63 (W)
T3-4BOLT	.48, .63, .82
T3-V-BAND	.63, .82
V-BAND IN/OUT	.64, .82
T4-V-BAND	.58, .68

### Turbine Hsg Option Group B HP62

Style	A/R's
MITSU	.63 (W, WD, N)
BUICK	.63
T3-5BOLT	.63 (W)
T3-4BOLT	.63, .82
T3-V-BAND	.63, .82
V-BAND IN/OUT	.82
T4-V-BAND	.58, .68, .81

### Turbine Hsg Option Group C HP65

Style	A/R's
MITSU	.63 (W, WD, N)
BUICK	.63, .85
T3-5BOLT	.63 (W)
T3-4BOLT	.63, .82
T3-V-BAND	.63, .82
T4-V-BAND	.58, .68, .81, .96

### Turbine Hsg Option Group D HPQ

Style	A/R's
MITSU	N/A
BUICK	.63, .85
T3-5BOLT	N/A
T3-4BOLT	N/A
T3-V-BAND	N/A
T4-V-BAND	.58, .68, .81, .96

### Turbine Hsg Option Group E HPS

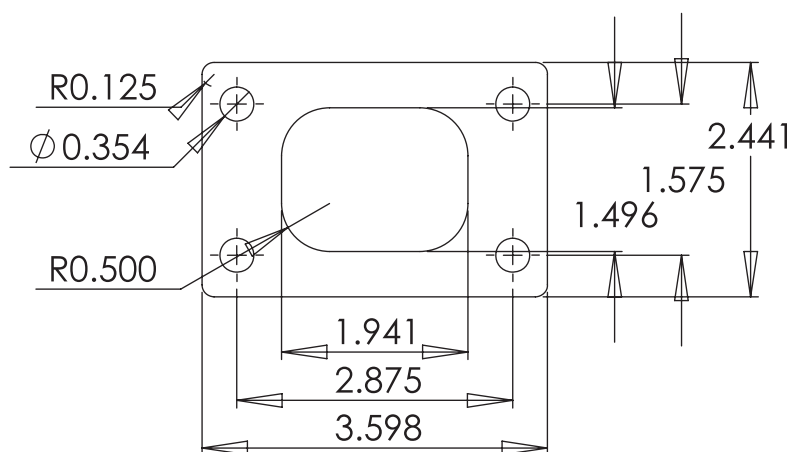
Style	A/R's
MITSU	N/A
BUICK	N/A
T3-5BOLT	N/A
T3-4BOLT	N/A
T3-V-BAND	N/A
T4-V-BAND	.81, .96

Finding the right turbo is more than just picking the level of power you want to make. It takes the right exhaust housing and compressor cover as well. *PRECISION TURBO* is well known for having one of the widest selections of housings for both ends.

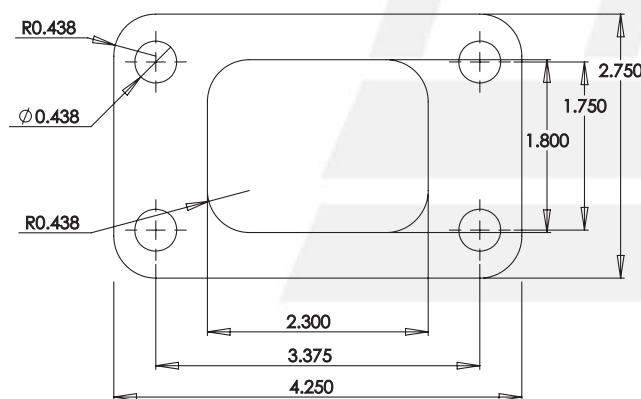
*PRECISION TURBO* offers turbochargers with T25, T3, T4, T5 and V-band exhaust inlets.

T3 inlet exhaust housings come with the user's choice of 4-bolt, 5-bolt, or V-band outlets in various A/R's. *PRECISION TURBO'S* T4 housings utilize a V-band connection.

*PRECISION TURBO* offers a wide variety of T4 housings in tangential style castings with .58, .68, .81, and .96 A/R's along with on-center designs in .69 and .85 A/R scrolls.

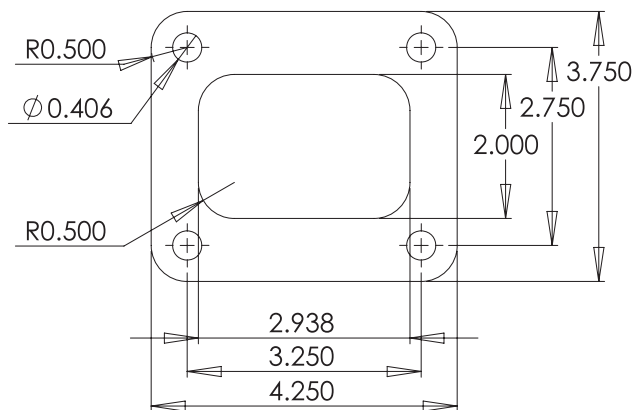


**T25 INLET**

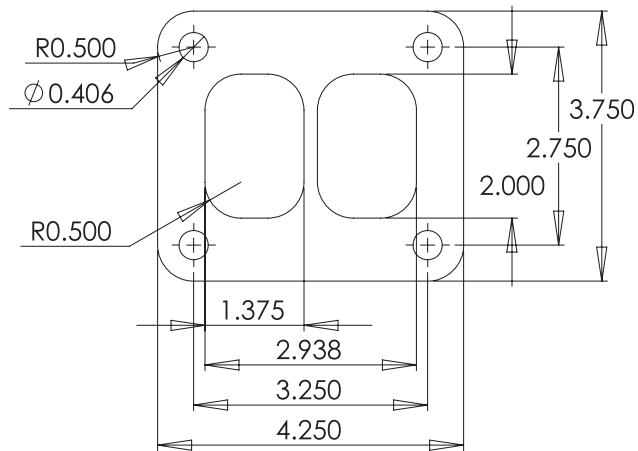


**T3 INLET**

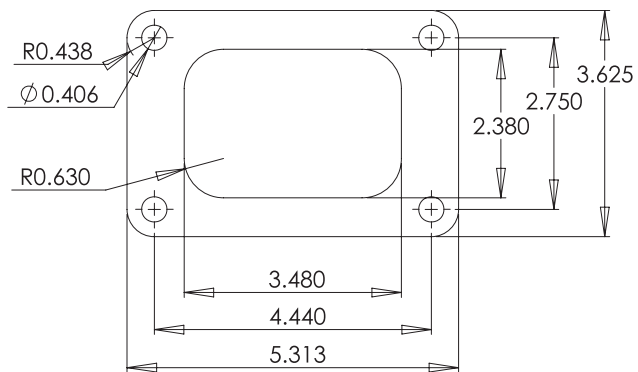




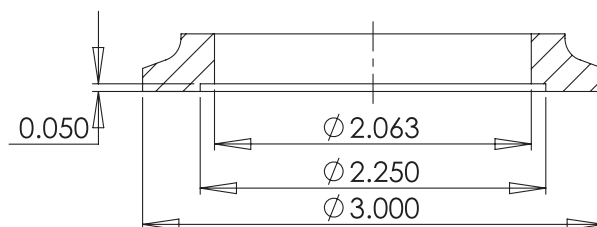
**T4 INLET**



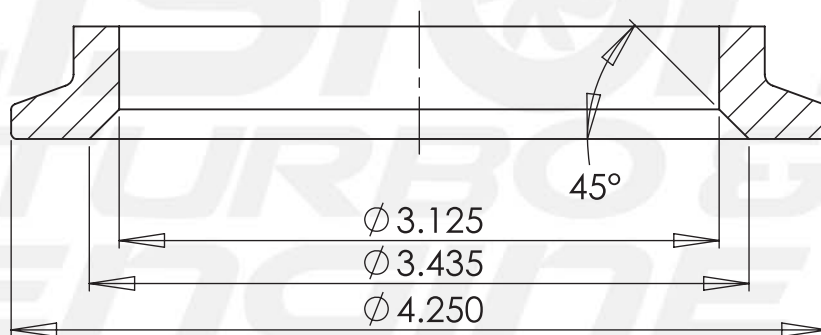
**T4 DIVIDED INLET**



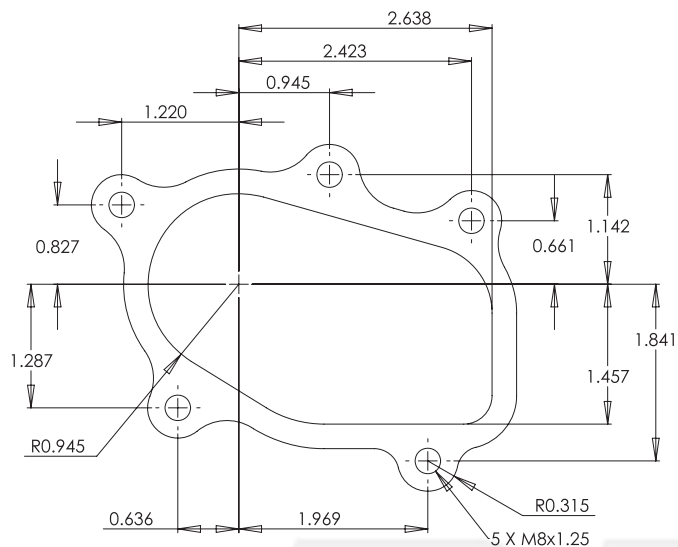
**T5 INLET**



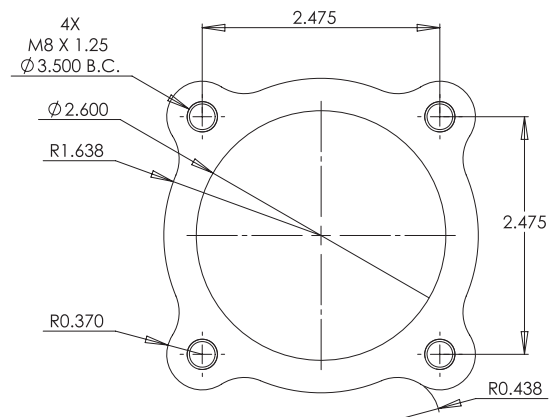
**THV INLET**



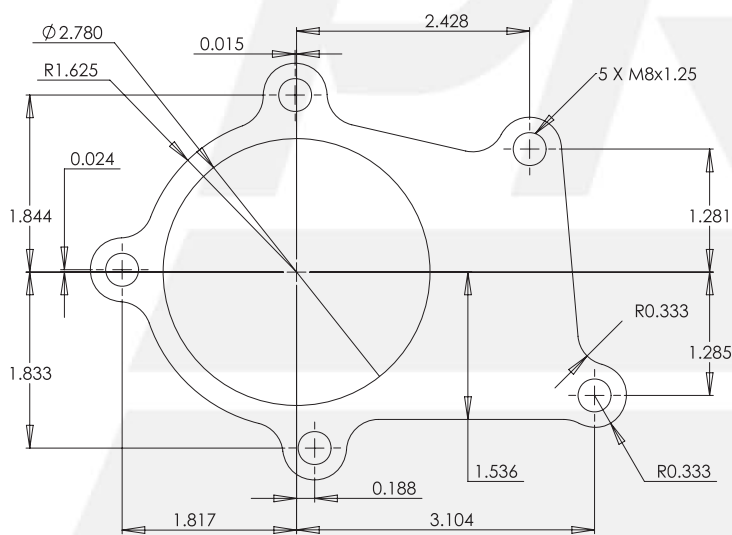
**PRO MOD INLET**



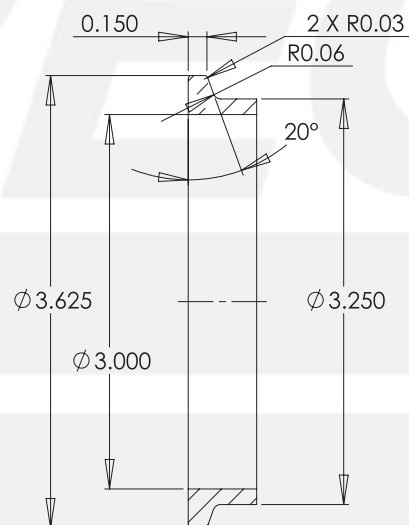
**T25 DISCHARGE**



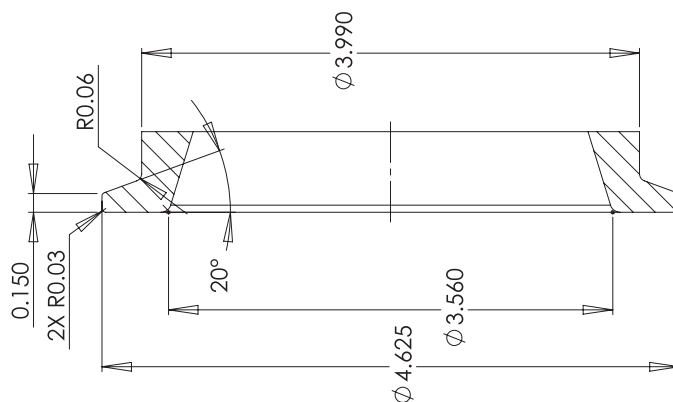
**T3 4-BOLT DISCHARGE**



**T3 5-BOLT DISCHARGE**

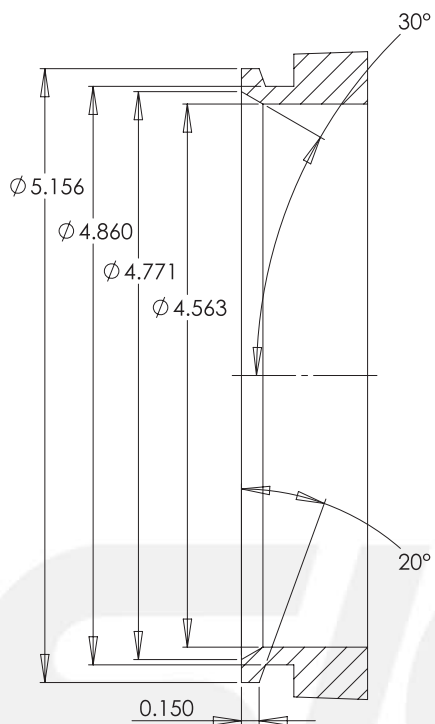


**T4 DISCHARGE**

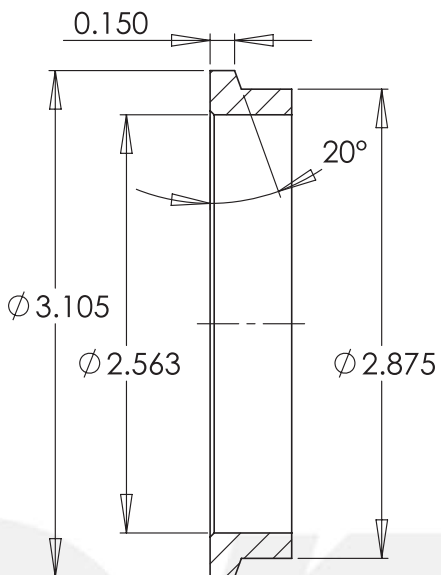


**GT42 DISCHARGE**



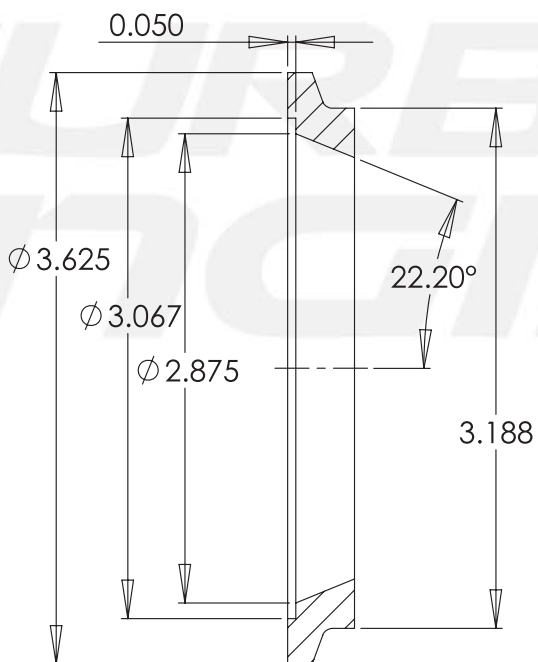


**T5 DISCHARGE**

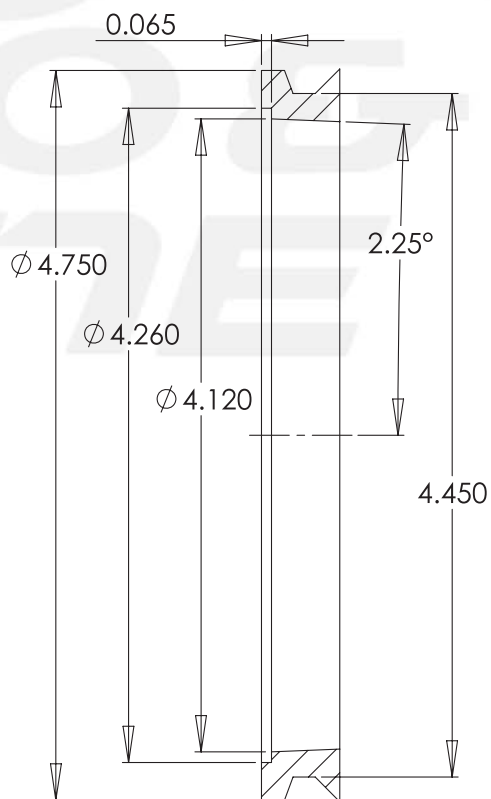


**SECTION A-A  
SCALE 1 : 1**

**THGT V-BAND DISCHARGE**

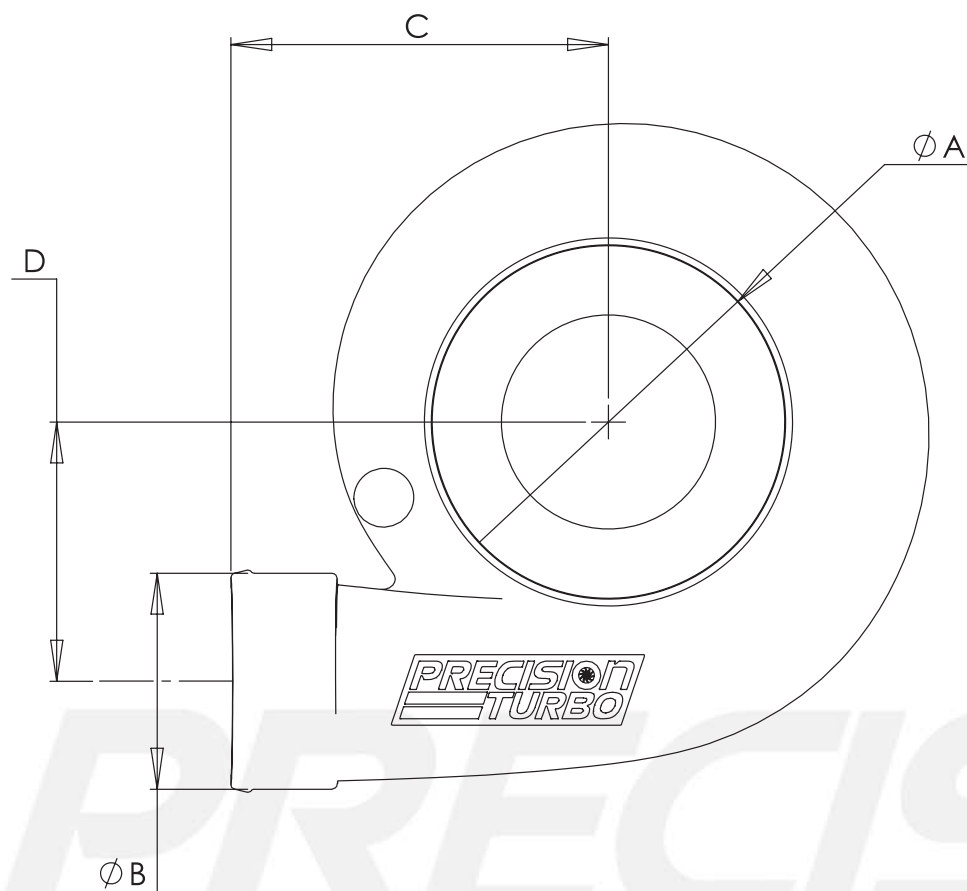


**THV OUTLET**



**PRO MOD DISCHARGE**

*PRECISION TURBO* offers a variety of compressor covers with different inlet/outlet configurations for most turbochargers. Ported shroud compressor covers are available on larger model turbochargers to help alleviate compressor surge. If you need further information, please contact one of our Sales/Technical Representatives.



COMPRESSOR HOUSING DIMENSIONS

COMP. HSG.	Ø A INLET	Ø B OUTLET	C	D	PORTED SHROUD AVAILABLE
CCB__	2.8	2.0	4.25	2.25	NO
CCE__	3.0	2.0	4.35	2.25	NO
CCS__	4.0	2.5	4.35	3.00	YES
CCH__	4.0	3.0	5.45	3.10	YES
CC2__	5.0	4.2 V-BAND	4.85	4.25	YES
CC7__	5.0	4.2 V-BAND	4.80	4.95	YES
CC7__S	5.0	4.0	5.50	4.95	YES
CCP__	7.0	4.0	5.75	5.45	NO



## HOSES

Straight Hoses 4-ply Nomex Silicone			
Part Number	I.D. Size	Color	UOM
PTP076-2000	2"	Black	Inch
PTP076-2003	2.5"	Black	Inch
PTP076-2006	3"	Black	Inch
PTP076-2009	4"	Black	Inch
PTP076-2012	3"	Black	4" Long
PTP076-2015	3"	Black	5" Long
Reducer Hoses 4-ply Nomex Silicone			
PTP076-3000	2" to 2.5"	Black	3" Long
PTP076-3003	2" to 3"	Black	4" Long
PTP076-3004	2" to 3"	Black	6" Long
PTP076-3006	2.5" to 3"	Black	5" Long
PTP076-3009	2.5" to 3"	Black	3" Long
PTP076-3012	3" to 3.5"	Black	3" Long
PTP076-3015	3" to 4"	Black	3 1/4" Long
PTP076-3018	3.5" to 4"	Black	3 1/4" Long
PTP076-3020	3.625" to 3"	Black	3 1/4" Long
PTP076-3022	3.825" to 3"	Black	3 1/4" Long
Hump Hoses 4-ply Nomex Silicone			
PTP076-4000	2.00" ID x 3"	Black	3 1/8"
PTP076-4002	2.50" ID x 3"	Black	3 1/8"
PTP076-4004	3.00" ID x 3"	Black	3 1/8"
PTP076-4006	3.50" ID x 3"	Black	3 1/8"
Elbow Hoses 4-ply Nomex Silicone			
PTP076-5000	2.5" ID; 45°	Black	10" Legs
PTP076-5002	3.0" ID; 45°	Black	10" Legs
PTP076-5030	2.5" ID; 90°	Black	10" Legs
PTP076-5032	3.0" ID; 90°	Black	10" Legs



## WELD ON ALUMINUM ELBOWS

Available in 2", 2.5" and 3" diameters



## CLAMPS

Part Number	Size	Style
PTP071-1005	2.00" - 2.50"	T-bolt clamp
PTP071-1008	2.25" - 2.75"	T-bolt clamp
PTP071-1011	2.50" - 3.00"	T-bolt clamp
PTP071-1012	2.50" - 2.75"	T-bolt clamp
PTP071-1014	2.75" - 3.25"	T-bolt clamp
PTP071-1017	3.00" - 3.50"	T-bolt clamp
PTP071-1020	3.25" - 3.75"	T-bolt clamp
PTP071-1021	3.88" - 4.19"	T-bolt clamp
PTP071-1023	4.00"	T-bolt clamp
PTP071-1026	3.00"	V-band clamp
PTP071-1029	3 5/8"	V-band clamp
PTP071-1032	4 1/2"	V-band clamp
PTP071-1035	5 1/4"	V-band clamp
PTP071-1038	GT42 Turbine discharge flange	V-band clamp
PTP071-1041	GT42 Comp discharge flange	V-band clamp
PTP071-1043	3 1/2" - 3 5/8"	V-band clamp
PTP071-1061	Pro Mod Turbine Housing Inlet	V-band clamp
PTP071-1064	Pro Mod Turbine Housing Discharge	V-band clamp

## FLANGES

Part Number (Inlet)	Description
PTP074-1008	T3 Inlet Flange (SS)
PTP074-1011	T4 Inlet Flange (MS)
PTP074-1014	Large Frame Inlet Flange (MS)
PTP074-1017	Buick 3 Bolt to T4 Bolt adapter (MS)
PTP074-1030	T3 V-band Inlet Flange (SS)
PTP074-1050	Pro Mod V-band Inlet Flange (SS)
Part Number (Discharge)	Description
PTP074-3002	T25 Exhaust Discharge Weld Flange (MS)
PTP074-3050	V-Band Discharge Flange f/PTE Housings (SS)
PTP074-3005	4 Bolt Discharge Weld Flange (MS)
PTP074-3008	5 Bolt Discharge Weld Flange (SS)
PTP074-3010	GT30R/GT35R4 Bolt Discharge Weld Flange (SS)
PTP074-3012	3" V-Band Discharge Weld Flange (SS)
PTP074-3014	3 5/8" Steel Weld Tube for Downpipe (MS)
PTP074-3036	3 5/8" Weld Flange for 3" or 3.5" DP (SS)
PTP074-3023	4" V-Band Discharge Weld Flange (MS)
PTP074-3029	5" V-Band Discharge Weld Flange (MS)
PTP074-3042	Comp. Discharge Flange for GT42/45/47/55
PTP074-3045	Turbine Outlet Flange for GT42 (SS)
PTP074-3046	Turbine Outlet Flange for GT42 (ALUM)
PTP074-3050	T3 V-Band Turbine Discharge Flange
PTP074-3060	Pro Mod 4" Turbine Discharge Flange (ALUM)
PTP074-3062	Pro Mod 4" Turbine Discharge Flange (MS)
PTP074-3064	Pro Mod 4.5" Turbine Discharge flange (ALUM)
PTP074-3066	Pro Mod 4.5" Turbine Discharge flange (MS)
Part Number (Oil Drain)	Description
PTP074-2005	Med/Klarge Frame Oil Drain Flange
PTP074-2008	Small Frame Oil Drain Flange -10AN
PTP074-2011	T3/T4 Oil Drain Flange 1/2" NPT
PTP074-2013	T3/T4 Oil Drain Flange 3/8" NPT
PTP074-2017	GT28R/GT30R/GT35R/GT42R Oil Drain Flange

### PRECISION 46mm WASTEGATES

The Precision 46mm wastegate is made from high grade, high temperature stainless steel and billet aluminum components. It features our own purpose designed Kevlar reinforced wastegate diaphragm and a 347 stainless investment cast valve body. The valve body has a smooth internal surface, giving the unit exceptional flow and accurate boost control. It features a Nickel Chromium Alloy valve and 5 different 17-7 precipitation hardened springs, which can be configured to control boost from 1.5PSI up to 25.5PSI. Also included are stainless steel inlet and outlet flanges with clamps. All units feature a black anodized 6061 aluminum billet wastegate cap. It is generally compatible with most aftermarket manual and electronic boost controllers on the market today.



### HKS GT II WASTEGATES

The HKS GT II Wastegates are the latest in wastegate technology. They feature a lower body cast from stainless steel and an anodized purple upper case machined from billet aluminum. The GT II Wastegates weighs approximately 2/3's the weight of the original GT Wastegate and are significantly smaller in height and width. Their compact size combined with the GT II's V-band inlet and outlet flanges allows for versatile mounting in tight spaces. GT II Wastegates also include additional wastegate springs which allow for different base boost level starting points. A special tool is also included which allows for the simple installation of the extra wastegate springs. HKS GT II Wastegates are available with either a 50mm or 60mm stainless steel valve, and have base boost levels that range from 0.8kg/cm<sup>2</sup> (11.6PSI) - 2.0kg/cm<sup>2</sup> (29.0PSI) and 0.6kg/cm<sup>2</sup> (8.5PSI) - 2.1kg/cm<sup>2</sup> (29.9PSI), respectively.



### TIAL 60mm WASTEGATE

With a Nickel based super alloy valve and high temp NiCrFe housing, this wastegate will provide superior product life under the most demanding conditions. 17-7 PH stainless actuator spring provides consistent pressure at high temperatures. Each unit includes the necessary flanges and clamps.







**TiAL**  
SPORT

### TiAL 50mm BLOW OFF VALVE

This unit features a 50.5mm valve with excellent flow capacity for either supercharged or turbocharged applications. The valve seal utilizes a Viton O-ring that is clamped in place to prevent the possibility of sticking to the seat and pulling out. The valve stem and guide are Teflon-lubricated, hard anodize-coated for wear resistance. Each unit includes an aluminum banjo type air fitting and bolt with an oversized 10mm hose barb for quick response. Flanges sold separately.

### PROCHARGER RACE BYPASS VALVE

For the ultimate in race bypass valves, look no further than this Procharger model. This unit is capable of supporting nearly 2,000 horsepower, and can be found on some of the fastest turbocharged and supercharged race cars in the country.

*\*Looking for a different  
wastegate or blow off valve?*

*PRECISION TURBO carries the  
full line of HKS and TiAL boost  
control products.\**

yPromo  
promote yours



### NLR AMS 1000 BOOST CONTROLLER

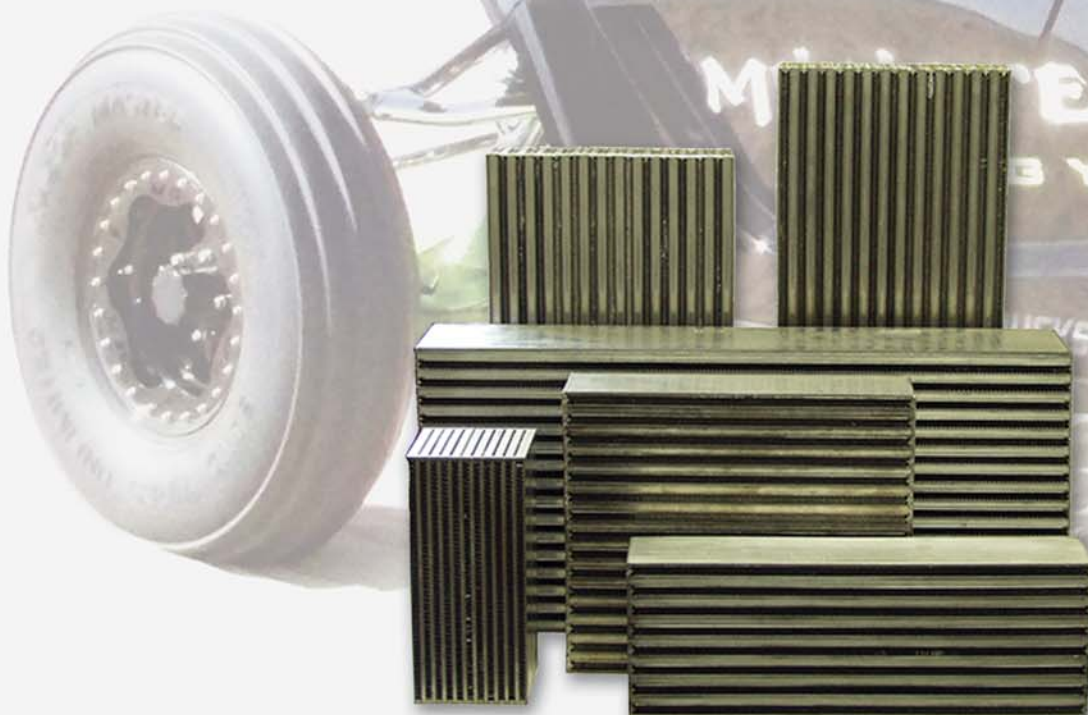
PRECISION TURBO is proud to be a distributor for the AMS - 1000 boost controller. This is the boost controller that is found on some the world's quickest and fastest bikes, cars, snowmobiles, and boats. Think about it...engineered and designed to control boost on 600hp street tire (6 inch contact patch), no wheelie bar bikes that run mid 7's at over 200MPH in the quarter mile. Imagine what it can do for you!

*PRECISION TURBO* has been well known for their leadership in heat exchanger products for nearly every application. That same cutting edge technology is yours with this line of air-to-air cores. All of these cores listed below feature bar and plate construction, which can withstand higher boost pressures. This construction is much more resistant to damage from road hazards than tube and fin designs. Use these high efficiency cores with your own end tanks, or we can custom fabricate an intercooler to your specifications.



### AIR-TO-AIR INTERCOOLER CORES

Part Number	A Length Inches	B Height Inches	C Depth Inches	HP Rating
PIN051-1001	6.00	11.70	3.00	225
PIN051-1005	6.00	12.00	3.50	250
PIN051-1009	6.00	12.00	4.50	325
PIN051-1021	8.00	11.70	4.50	425
PIN051-1029	10.00	12.00	3.00	350
PIN051-1053	13.00	17.35	3.00	680
PIN051-1097	18.00	6.40	3.00	350
PIN051-2101	18.00	6.40	3.50	400
PIN051-1112	18.00	10.50	3.00	570
PIN051-1120	18.00	11.16	4.50	900
PIN051-1124	18.00	12.00	3.00	650
PIN051-2160	24.00	8.00	3.50	675
PIN051-1164	24.00	6.40	3.00	400
PIN051-1168	24.00	6.40	3.50	460
PIN051-2182	24.00	10.00	3.50	775
PIN051-1196	24.00	12.00	3.50	1000
PIN051-1216	27.00	10.50	3.50	850







## PRECISION UNIVERSAL FRONT MOUNT INTERCOOLERS

*PRECISION TURBO'S* universal front mount intercoolers feature high density cores with bar and plate construction, which allows each unit to better function as a heat sink, and that's a big advantage in stop and go traffic. This design is also much less susceptible to road hazard damage and can handle higher boost levels than comparable tube and fin designs. Each intercooler comes with contoured cast aluminum end tanks with mounting tabs. Drilled and tapped mounting holes are included with all except PIN053-1005.

### AIR-TO-AIR INTERCOOLERS

Part Number	HP Rating	Overall Dimensions	Air In / Out
PIN053-1005	350-hp	26 3/4" L x 6 1/4" H x 3 1/2" D	2 1/2"
PIN053-1010	600-hp	31 1/2" L x 8" H x 3 1/2" D	2 3/4"
PIN053-1015	750-hp	31 1/2" L x 10 5/8" H x 3 1/2" D	2 3/4"
PIN053-1020	825-hp	34 1/2" L x 10 1/2" H x 3 1/2" D	2 3/4"



### 1986-87 BUICK GN AIR-TO-AIR INTERCOOLERS

Part Number	HP Rating	Installed Location	Overall Dimensions	Inlet Outlet
PIN053-2005	750	Stock Location	13" L x 17 1/4" H x 3" D	3"
PIN053-2010	950	Front Mount	31 1/2" L x 17" H x 4 1/2" D	3"

### STOCK LOCATION INTERCOOLER

#### 1986-1987 Buick Grand National & T-Type

Owners of the 1986-1987 Buick Turbo Regals have been raving about this product since it was introduced a few years ago. Made with a high efficiency bar and plate core with 18 flow and 19 cooling rows, this kit comes with cast aluminum end tanks that have been specifically contoured to optimize air flow. Included with the kit is a new mandrel bent 3" inlet up pipe, a custom aluminum shroud and all the hoses, clamps, brackets, and mounting hardware for a true direct fit, bolt on installation.



### FRONT MOUNT INTERCOOLER

#### 1986-1987 Buick Grand National & T-Type

Often imitated; never duplicated. *PRECISION TURBO'S* Front Mount Intercooler is the ultimate answer for the best in cooling capacity and maximum horsepower. These intercoolers feature highly efficient cores with cast aluminum, smooth bend end tanks with 3" inlets and outlets. This kit comes with mandrel bent 3" aluminum intercooler pipes and all of the application specific hoses and clamps needed for a hassle free bolt on installation. Mounting tabs are built into the tanks for easy mounting to the radiator shroud. Also included are all the hardware, bolts, and stand off needed for an easy installation.



*PRECISION TURBO* has led the way for years with cutting edge technology in heat exchanger products. Our liquid-to-air intercoolers have been behind the scenes in many of the sport's best known supercharged and turbocharged vehicles. *PRECISION TURBO* offers a versatile line up of off-the-shelf intercoolers that are in stock and ready to go on your vehicle today.

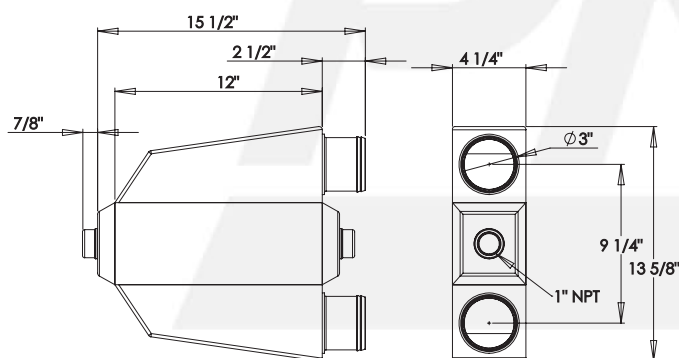
PT1000



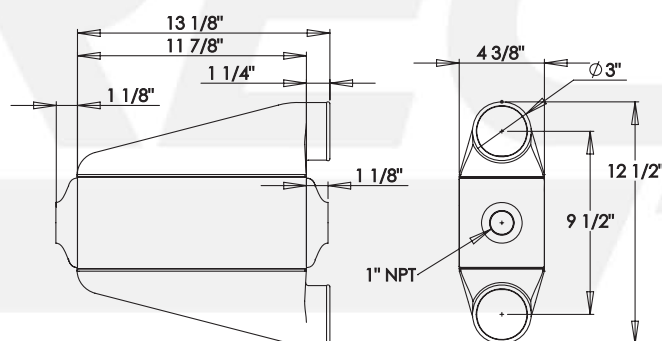
PT1001



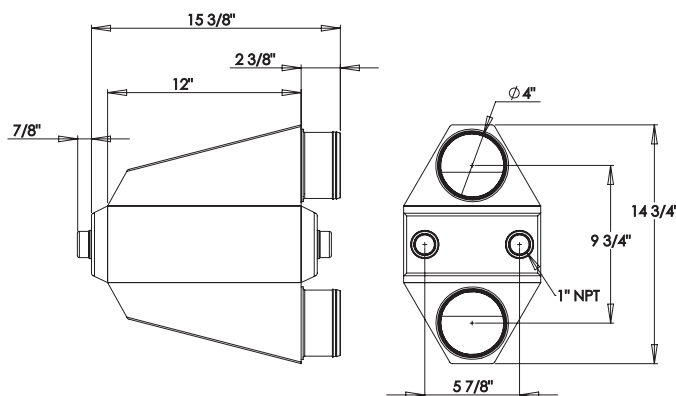
PT2000



PT1000



PT1001



PT2000

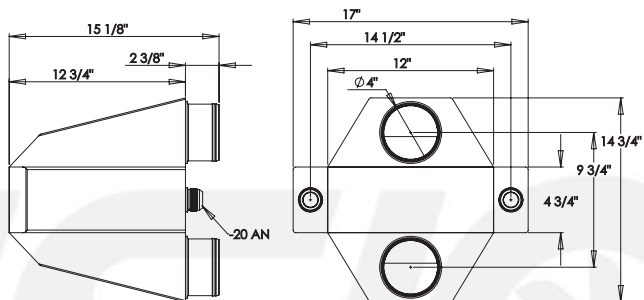
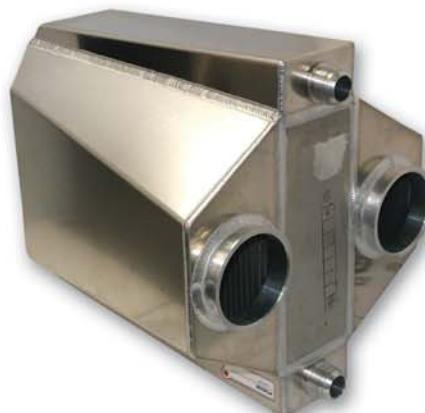




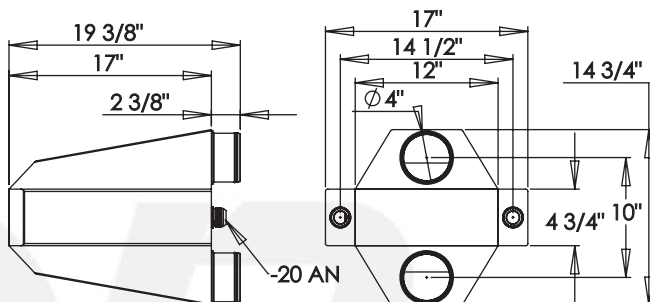
PT3000



PT4000



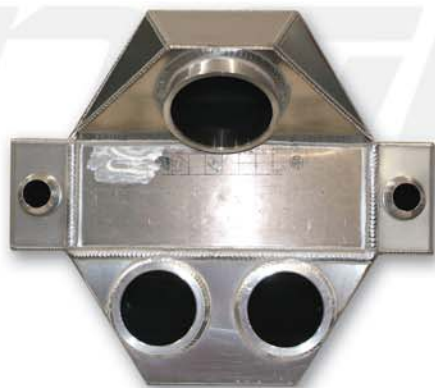
PT3000



PT4000

*Need something a little more custom for you application?*

PRECISION TURBO also offers custom made air-to-air and liquid-to-air intercoolers for the best fit with your application. Call for more info today!



CUSTOM PT3000



CUSTOM PT1000



CUSTOM  
AIR-TO-AIR INTERCOOLER

Selecting the right fuel system components can be a stressful experience. **PRECISION TURBO** has long been a leader in Aeromotive, Walbro, Waterman, and Weldon products. Combine this with smaller, miscellaneous parts ranging from clamps to fuel rails, and you've got a one stop fuel system shop ready to get you going today!

### AEROMOTIVE

With their unique combination of ultra-high performance, durability, and reliability, Aeromotive's in-line pumps leave the competition behind. All Aeromotive fuel pumps are designed to meet the high performance demands of your application with durability and reliability. Whether you're running 200HP or 2000HP, carbureted or fuel injected, Aeromotive pumps optimize flow and line pressure. In addition to their line of fuel pumps, Aeromotive regulators beat the competition with the best of all worlds; Outstanding, consistent performance from equipment that's built to last. Aeromotive delivers more flow than similar regulators thanks to a custom, convoluted diaphragm that maximizes piston stroke while minimizing stress. Every model uses a poppet designed specifically for that regulator, and a diaphragm fabricated from a proprietary elastomer material. The standard vacuum boost port delivers perfect 1:1 boost reference and makes these regulators ideal for turbocharged and supercharged engines.



### WALBRO

One of the leading original equipment fuel pump suppliers, Walbro Automotive supplies a wide range of electric fuel pumps and related fuel system components to the automotive market. These pumps are widely known for their quality and dependability worldwide. Walbro in-tank electric fuel pumps utilize a proven gerotor design. The outside dimensions, however, are compact enough to fit existing hanger assemblies, without modification. With pumps available for many applications, you can be assured you'll receive the pump and installation kit specifically designed for your vehicle.



### WELDON

With legendary performance and reliability, Weldon fuel pumps are the ones you can trust with your mega dollar engine. Weldon racing pumps were developed using 68 years of aerospace/military experience, materials and technology to deliver high flow, high-pressure fuel to racing engines with unprecedented reliability. With pumps and regulators available for both fuel injection and carbureted applications, Weldon Pump continues to be on the cutting edge of fuel delivery products.







Upgrading fuel injectors may be a necessity when changing turbochargers, exhaust headers, throttle bodies, fuel systems, or cylinder heads. It's important to insist on the best. **PRECISION TURBO** brand fuel injectors are individually hand selected, flow checked and matched to within 1% of each other for optimum performance from your vehicle. All horsepower ratings are based upon a 90% duty cycle at 43.5 psi of fuel pressure based upon a BSFC of .50. Compatible with all known aftermarket drivers (unless otherwise noted).

## SPORT COMPACT INJECTORS

Part Number	Size C/C	Impedance	Nozzle	Each Injector Supports
PFU042-0310	310	High	Disc	52 HP
PFU042-0400	400	High	Ball & Seat	67 HP
PFU042-0440	440	High	Disc	77 HP
PFU042-0525	525	High	Ball & Seat	94 HP
PFU042-0580	580	Low	Ball & Seat	99 HP
PFU042-0650	680	Low	Ball & Seat	117 HP
PFU042-0651*	650	High	Disc	117 HP
PFU042-0780	780	Low	Ball & Seat	135 HP
PFU042-0880	880	Low	Ball & Seat	151 HP
PFU042-0950	1000	Low	Ball & Seat	171 HP
PFU042-1200	1200	Low	Ball & Seat	216 HP
PFU042-1600	1600	Low	Pintle	297 HP

## SPORT COMPACT MITSU INJECTORS

Part Number	Size C/C	Impedance	Nozzle	Each Injector Supports
PFU043-0440	440	High	Disc	77 HP
PFU043-0500	525	High	Ball & Seat	90 HP
PFU043-0540	550	Low	Disc	94 HP
PFU043-0580	580	Low	Ball & Seat	99 HP
PFU043-0680	680	Low	Ball & Seat	117 HP
PFU043-0780	780	Low	Ball & Seat	135 HP
PFU043-0880	880	Low	Ball & Seat	151 HP
PFU043-0950	1000	Low	Ball & Seat	171 HP
PFU043-1200	1200	Low	Ball & Seat	216 HP
PFU043-1600	1600	Low	Pintle	297 HP

## DOMESTIC INJECTORS

Part Number	Size lb/hr	Impedance	Nozzle	Each Injector Supports
PFU041-0240	24	High	Pintle	43 HP
PFU041-0300	30	High	Disc	54 HP
PFU041-0370	37	High	Ball & Seat	67 HP
PFU041-0380	38	High	Disc	68 HP
PFU041-0420	42.5	High	Disc	77 HP
PFU041-0421	42.5	High	Multec 2	77 HP
PFU041-0500	50	High	Ball & Seat	94 HP
PFU041-0550	55	Low	Ball & Seat	99 HP
PFU041-0650	65	Low	Ball & Seat	117 HP
PFU041-0651*	65	High	Disc	117 HP
PFU041-0652**	65	High	Disc	117 HP
PFU041-0750	75	Low	Ball & Seat	135 HP
PFU041-0840	84	Low	Ball & Seat	151 HP
PFU041-0950	95	Low	Ball & Seat	171 HP
PFU041-1200	120	Low	Ball & Seat	216 HP
PFU041-1600	165	Low	Pintle	297 HP
PFU041-2250	225	Low	Pencil	405 HP
PFU041-6000***	600	Low	Pintle	462 HP

\* Tall \*\*Short \*\*\* For use with alcohol; based on 85PSI

\*\*\*Must be used with specific BS3 EMS



**Call us about injector connectors,  
fuel rails, replacement o-rings,  
and injector bungs!**



Big Stuff 3 has quickly gained the top reputation for state of the art electronic engine and power train controllers for the performance aftermarket. In its base form, the GEN3 SEFI system includes WBO2 control, individual cylinder fuel and spark compensation, along with the following additional standard features:

- Configurable Load & RPM axes to enable optimization in desired operating range
- Internal data logging (DAI) - 52 channels at 50 times per second
- Capable of driving smart and dumb Coil-on-Plug (COP) ignitions with the stock sensors.
- Injector phasing, at the start of the fuel injection event.
- Programmable "peak-&hold" injector drivers with current chopping capability. Software configurable ignition options for GM HEI, Ford TFI, LT1, V6\_DIS, and IPU.
- Individual cylinder fuel & spark compensation. Turbocharged starting line timing curve.
- Integrated 2-Step for Coil-On-Plug (COP) ignitions.
- 1, 2, 3, 4 & 5 BAR MAP sensor compatible
- Programmable injector opening vs. battery voltage.
- Improved transient fueling algorithms
- Seamless decel fuel cut-off



Big Stuff 3 is keeping the bar high by continuing to offer true performance features (optional) such as:

- Wide-band methanol control down to 2.9:1 A/F ratio
- Dual wide-band O2 systems
- Engine Torque Management (ETM) to manage torque in 32 different levels; New updated traction control with 1st gear power management. With this feature, control is now a function of spark retard.
- CAN interface with Racepak Ultra-dash and VNET, as well as EGT monitoring and recording.
- CAN interface for EGT monitoring and recording
- E10 - E85 ethanol systems
- Sequential fuel control for up to 24 injectors low impedance injectors in a staged configuration.
- 2 to 3-step starting line control for distributor and coil-on-plug systems
- External data logging (DAE) for recording fuel and oil pressure, driveshaft speed, turbo shaft speed, pan vacuum, etc.
- New DAE-2 allows for an accelerometer and transmission line pressure (500psi) input

**Need further proof?** Ask any number of the Champions or Record Holders who have relied on Big Stuff 3 Engine Management Systems to help them find the winner's circle.



Designed as a standalone (EFI) system that totally replaces your factory computer and wiring harness, the XFI system eliminates the performance-compromised OEM controller, replacing it with an ECU and wiring harness that are surprisingly easy to install, a joy to tune with any Windows-based computer, and capable of performance that will blow your mind. In an effort to provide racers and street performance enthusiasts with the widest possible range of available configurations, FAST offers XFI ECUs in standard, onboard data logging, and Intelligent Traction Control versions. All three are available to control either 4 through 8, or 16 injectors, with the 16-injector version able to support over 4,600 naturally aspirated horsepower. XFI is compatible with all common ignition types, including GM HEI, LT1, LS1, -2, -6, DIS, Ford EDIS (4.6L & 5.4L), and Dodge 5.7L Hemi applications.

AEM's Series 2 Programmable Engine Management System is more powerful than the earlier, Series 1 models. Like its predecessor, AEM's Series 2 Plug & Play EMS plugs directly into a vehicle's factory ECU harness and requires no additional wiring or hardware. Windows™ compatible software (2000, XP, NT, 98, 95, ME) makes the task of copying, viewing and manipulating data as simple as a click of the mouse. Their new AEMTUNER software is infinitely adjustable, and allows tuners to program virtually any combination of engine control, power adders and auxiliary devices, and accurately delivers proper amounts of fuel and correct ignition timing for any boost level or operating condition.







The LM-2 combines an air/fuel ratio meter, a full-function 32-channel datalogger, and powerful software to deliver a complete tuning workshop for less than the cost of one dyno day. Whether you have a piggy-back fuel controller, race carb, aftermarket ECU, OBD-II tuning software, or a flash/chip programmer, an LM-2 is the tool you need to dial in maximum HP. The meter's digital signal processing technology provides data on exactly how rich or lean an engine is running at any load. The LM-2's self-calibrating circuitry also compensates for changes in temperature, altitude, and sensor condition. Not exactly what you are looking for? Don't worry. *PRECISION TURBO* carries the entire Innovate Motorsports product line.

The affordable V300SD series data recorder is the most common recorder for Pro Stock, Pro Modified, and many of the Sportsman classes. In its base configuration, the V300 monitors six parameters (Engine RPM, Driveshaft RPM, Accel G, Lateral G, Battery Volts, and a 12-volt event), but it can be expanded to monitor up to 67 channels of data to meet the needs of most users. The V300SD can sample data as quickly as 1000 times per second. Uploading recorded data to your computer is done via a SD memory card, which provides you with hours of recording time and the ability to store many runs prior to uploading the data. The V300SD also has multiple methods of displaying monitored data in real time. When linked by serial cable to your PC you can view all recorded functions in either graph format or on 8 virtual gauges while the vehicle is running. Any monitored function can also be displayed in real time on Racepak's optional Intelli-Gauges or Ultra Dash. Don't see what you need? Give us a call. We proudly offer the entire Racepak product line.





**PRECISION TURBO** has the answer to your electronic fuel injection hardware needs with throttle bodies, plenums, wiring harnesses, sensors and more. Give us a call today for the latest products and best available pricing.

## FORD MUSTANG

CNC Machined, Billet Aluminum, Hardware & Gaskets Included with Most Throttle Bodies

Part Number	Product Description	Year
PEP024-1026	65mm TB	1986-93
PEP024-1029	65mm TB Race	1986-93
PEP024-1032	70mm TB	1986-93
PEP024-1035	70mm TB Race	1986-93
PEP024-1040	75mm TB	1986-93
PEP024-1043	75mm TB Race	1986-93
PEP024-1048	80mm TB Race	1986-93
PEP024-1050	85mm TB Race	1986-93
PEP024-1052	90mm TB Race	1986-93
PEP024-1054	90mm Wiggins Clamp TB Race	1986-93
PEP024-1055	90mm Wiggins Clamp TB Kit	1986-93
PEP024-1056	105mm Full TB Race	1986-93
PEP024-1038	70mm 2V TB	1996-04
PEP024-1046	75mm 2V TB	1996-04
PEP024-1060	Cobra & Bullitt Ellipse TB	1996-98
PEP024-1061	Special Cobra Oval TB	1996-98
PEP024-1062	Cobra TB & Power Inlet	2003
PEP024-1063	Cobra TB & Power Inlet (polish)	2003



## PLENUMS

Part Number	Inlet Size	Elbow	Orientation	Flange
PEP022-1008	65mm	N/A	Forward	Buick
PEP022-1009	65mm	N/A	Forward	Buick
PEP022-1010	70mm	N/A	Forward	Buick
PEP022-1011	70mm	N/A	Forward	Buick
PEP023-1005	90mm	100-degree	Forward	4150
PEP023-1006	90mm	90-degree	Forward	4150
PEP023-1008	90mm	90-degree	Sideways	4150
PEP023-1009	90mm	100-degree	Forward	4500
PEP023-1010	90mm	90-degree	Forward	4500
PEP023-1014	90mm	100-degree	Sideways	4500
PEP023-1015	105mm	100-degree	Forward	4500

## WILSON THROTTLE BODIES

CNC Machined, Billet Aluminum, Hardware & Gaskets Included With Most Throttle Bodies

Part Number	Product Description
PEP024-1500	65mm Throttle Body
PEP024-1502	70mm Throttle Body
PEP024-1504	75mm Throttle Body
PEP024-1506	80mm Throttle Body
PEP024-1508	90mm Throttle Body
PEP024-1510	95mm Throttle Body
PEP024-1512	105mm Throttle Body
PEP024-1536	4500 Throttle Body

**WILSON  
MANIFOLDS**



## BUICK GRAND NATIONAL

CNC Machined, Billet Aluminum, Hardware & Gaskets Included

Part Number	Product Description	Year
PEP024-1005	65mm Throttle Body	1986-87
PEP024-1008	70mm Throttle Body	1986-87

## CHEVROLET CAMARO

CNC Machined, Billet Aluminum, Hardware & Gaskets Included

Part Number	Product Description	Year
C75-21	75mm LS1 Throttle Body	1998-99.5
C75-2	75mm LS1 Throttle Body	1999.5 & Up

## DODGE VIPER

CNC Machined, Billet Aluminum, SS Screws & Gaskets Included

Part Number	Product Description	Year
PEP024-1023	65mm RT-10	1998-99.5
PEP024-1024	70mm GTS	1999.5 & Up

## Ford GT

CNC Machined, Billet Aluminum, Hardware & Gaskets Included

Part Number	Product Description	Year
PEP024-1065	Ford GT Dual Blade TB	2005-06

Photo Courtesy of 1320Video







## WARRANTY

Each **PRECISION TURBO** brand turbocharger is warranted to be free from manufacturer's defects for a period of 12 months or 12,000 miles, whichever occurs first, from date of original invoice. Manufacturer's warranty otherwise applies. Seller expressly disclaims all implied warranties of merchantability and/or fitness for a particular purpose.

**PRECISION TURBO** will repair or replace at its discretion any **PRECISION TURBO** branded product that proves defective in material or workmanship under normal installation, use and service. In the case of any warranty claim with regards to defects in material or workmanship, the product in question should be returned freight prepaid to the address shown below.

This warranty does not cover damage or failure of components due to normal wear and tear. There is no warranty on any parts used in race applications or on products that have been physically altered, improperly installed or not maintained. Seller's warranty is in lieu of all other warranties, express or implied.

## RETURNS

Returns for credit or exchange are allowable only with a Returned Goods Authorization (RGA) number for 30 days from date of shipment. Restocking fees may apply. Product must be new or in resalable condition and returned at the customer's expense freight prepaid. All claims for shipping damage must be placed with the carrier.

## DISCLAIMER

**PRECISION TURBO** does not warrant the accuracy or completeness of the information contained in this catalog. Any information and specifications contained in this catalog are provided "as is" without any representation or warranty, express or implied, of any kind, including, but not limited to, warranties of merchantability, non-infringement, or fitness for any particular purpose. Some jurisdictions do not allow for the exclusion of implied warranties, so the above exclusions may not apply to you.

Any cause of action you may have with respect to your use of this catalog must be commenced within one (1) year after the claim or cause of action arises within Porter County, Indiana. If for any reason a court of competent jurisdiction finds any provision of the Agreement or portion thereof, to be unenforceable, that provision shall be enforced to the maximum extent permissible so as to affect the intent of the Agreement, and the remainder of this Agreement shall continue in full force and effect.

Federal, state or provincial laws, rules and regulations in the U.S., Canada or elsewhere may prohibit the removal or modification of components that were installed on motor vehicles or engines by the original equipment manufacturer in order to meet emissions requirements or to comply with safety regulations applicable to engines or vehicles manufactured for use on public roads. Removal of such components and installation of **PRECISION TURBO** products may be illegal and considered to be emissions-related tampering under applicable laws, rules and regulations. Motor vehicles or engines equipped with **PRECISION TURBO** products may not be used on public roads, as installation of such Products could cause the vehicles or engines to be non-compliant with applicable emissions and/or safety standards.

Installation of **PRECISION TURBO** products (or similar products from other manufacturers) on a motor vehicle or engine may void, reduce or otherwise adversely affect any warranties given by the manufacturer or seller of the vehicle, engine or other component parts. **PRECISION TURBO** shall not be liable for any such adverse effect on such other manufacturers' or sellers' warranties. In no event shall **PRECISION TURBO** be liable to any person or entity for any direct, indirect, special, consequential or other damages (including, without limitation, any lost profits, business interruption, loss of information or programs or other data on your information handling system) that are related to the use of, or the inability to use, the content, materials, and functions of the site or any linked website, even if expressly advised of the possibility of such damages.

### SHIPPING ADDRESS

**PRECISION TURBO**  
616A South Main Street  
Hebron, IN 46341

### PRECISION TURBO & ENGINE

Phone: 219.996.7832  
Fax: 219.996.7749  
www.precisionturbo.net

### MAILING ADDRESS

**PRECISION TURBO & ENGINE**  
P.O. Box 425  
Hebron, IN 46341

# PRECISION TURBO & ENGINE

P.O. Box 425, Hebron, IN 46341

219.996.7832 | FAX: 219.996.7749 | [www.precisionturbo.net](http://www.precisionturbo.net)

